



[Go to Product page](#)

Datasheet for ABIN2783993
anti-APOLD1 antibody (C-Term)

1 Image

Overview

Quantity:	100 µL
Target:	APOLD1
Binding Specificity:	C-Term
Reactivity:	Human, Cow, Rabbit
Host:	Rabbit
Clonality:	Polyclonal
Conjugate:	This APOLD1 antibody is un-conjugated
Application:	Western Blotting (WB)

Product Details

Immunogen:	The immunogen is a synthetic peptide directed towards the C-terminal region of Human APOLD1
Sequence:	AKIQKLAESL ESCTGALDEL SEQLSRVQL CTKSSRGHDL KISADQRAGL
Predicted Reactivity:	Cow: 100%, Human: 100%, Rabbit: 92%
Characteristics:	This is a rabbit polyclonal antibody against APOLD1. It was validated on Western Blot.
Purification:	Affinity Purified

Target Details

Target:	APOLD1
Alternative Name:	APOLD1 (APOLD1 Products)

Target Details

Background: APOLD1 is an endothelial cell early response protein that may play a role in regulation of endothelial cell signaling and vascular function.

Alias Symbols: VERGE

Protein Interaction Partner: FN1,

Protein Size: 248

Molecular Weight: 27 kDa

Gene ID: 81575

NCBI Accession: [NM_030817](#), [NP_110444](#)

Application Details

Restrictions: For Research Use only

Handling

Format: Liquid

Concentration: 1 mg/mL

Buffer: Liquid. Purified antibody supplied in 1x PBS buffer with 0.09 % (w/v) sodium azide and 2 % sucrose.

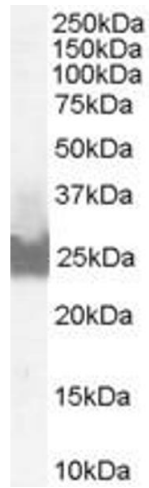
Preservative: Sodium azide

Precaution of Use: This product contains Sodium azide: a POISONOUS AND HAZARDOUS SUBSTANCE which should be handled by trained staff only.

Handling Advice: Avoid repeat freeze-thaw cycles.

Storage: -20 °C

Storage Comment: For short term use, store at 2-8°C up to 1 week. For long term storage, store at -20°C in small aliquots to prevent freeze-thaw cycles.



Western Blotting

Image 1.