

Datasheet for ABIN2783994

**anti-Apolipoprotein L 2 antibody (Middle Region)**[Go to Product page](#)**2** Images

## Overview

|                      |                            |
|----------------------|----------------------------|
| Quantity:            | 100 µL                     |
| Target:              | Apolipoprotein L 2 (APOL2) |
| Binding Specificity: | Middle Region              |
| Reactivity:          | Human, Rabbit              |
| Host:                | Rabbit                     |
| Clonality:           | Polyclonal                 |
| Application:         | Western Blotting (WB)      |

## Product Details

|                       |  |
|-----------------------|--|
| Immunogen:            | The immunogen is a synthetic peptide directed towards the middle region of human APOL2 |
| Sequence:             | DVVSLAYESK HLLEGAKSES AEELKKRAQE LEGKLNFLTK IHEMLQPGQD                                 |
| Predicted Reactivity: | Human: 100%, Rabbit: 79%   |
| Characteristics:      | This is a rabbit polyclonal antibody against APOL2. It was validated on Western Blot.  |
| Purification:         | Affinity Purified  |

## Target Details

|                   |  |
|-------------------|--|
| Target:           | Apolipoprotein L 2 (APOL2)   |
| Alternative Name: | APOL2 ( <a href="#">APOL2 Products</a> )   |
| Background:       | This gene is a member of the apolipoprotein L gene family. The encoded protein is found in the cytoplasm, where it may affect the movement of lipids or allow the binding of lipids to |

## Target Details

---

organelles. Two transcript variants encoding the same protein have been found for this gene.

Alias Symbols: APOL-II, APOL3

Protein Interaction Partner: UBC, AR,

Protein Size: 337

---

Molecular Weight: 37 kDa

---

Gene ID: 23780

---

NCBI Accession: [NM\\_030882](#), [NP\\_112092](#)

---

UniProt: [Q9BQE5](#)

---

Pathways: [The Global Phosphorylation Landscape of SARS-CoV-2 Infection](#)

## Application Details

---

Application Notes: Optimal working dilutions should be determined experimentally by the investigator.

---

Comment: Antigen size: 337 AA

---

Restrictions: For Research Use only

## Handling

---

Format: Liquid

---

Concentration: Lot specific

---

Buffer: Liquid. Purified antibody supplied in 1x PBS buffer with 0.09 % (w/v) sodium azide and 2 % sucrose.

---

Preservative: Sodium azide

---

Precaution of Use: This product contains Sodium azide: a POISONOUS AND HAZARDOUS SUBSTANCE which should be handled by trained staff only.

---

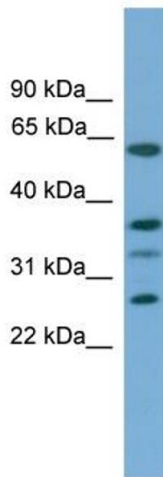
Handling Advice: Avoid repeated freeze-thaw cycles.

---

Storage: -20 °C

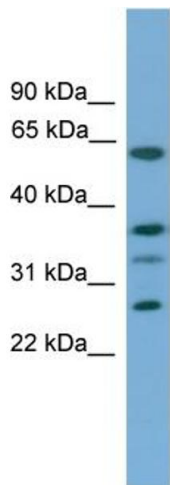
---

Storage Comment: For short term use, store at 2-8°C up to 1 week. For long term storage, store at -20°C in small aliquots to prevent freeze-thaw cycles.



### Western Blotting

**Image 1.** WB Suggested Anti-APOL2 Antibody Titration: 0.2-1 ug/ml Positive Control: MCF7 cell lysate



Rabbit Anti-APOL2 Antibody  
Catalog Number: ARP49974  
Lot Number: QC29449  
Lane: MCF7 Cell Lysate

Antibody Titration: 1.0µg/ml  
Gel Concentration: 12%

### Western Blotting

**Image 2.** WB Suggested Anti-APOL2  
Antibody Titration: 0.2-1 µg/mL  
Positive Control: MCF7 cell lysate