

Datasheet for ABIN2784006
anti-CRISPLD2 antibody (N-Term)[Go to Product page](#)

3 Images

Overview

Quantity:	100 µL
Target:	CRISPLD2
Binding Specificity:	N-Term
Reactivity:	Human, Mouse, Rat
Host:	Rabbit
Clonality:	Polyclonal
Conjugate:	This CRISPLD2 antibody is un-conjugated
Application:	Western Blotting (WB)

Product Details

Immunogen:	The immunogen is a synthetic peptide directed towards the N terminal region of human CRISPLD2
Sequence:	MSCVLGGVIP LGLLFLVCGS QGYLLPNVTL LEELLSKYQH NESHSRVRRRA
Predicted Reactivity:	Human: 100%, Mouse: 86%, Rat: 86%
Characteristics:	This is a rabbit polyclonal antibody against CRISPLD2. It was validated on Western Blot using a cell lysate as a positive control.
Purification:	Affinity Purified

Target Details

Target:	CRISPLD2
---------	----------

Target Details

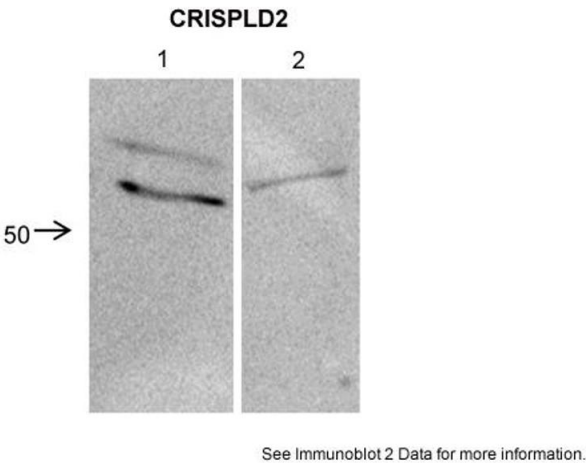
Alternative Name:	CRISPLD2 (CRISPLD2 Products)
Background:	CRISPLD2 is a novel NSCLP candidate gene. Alias Symbols: CRISP11, DKFZP434B044, LCRISP2, MGC74865 Protein Interaction Partner: IQCB1, Protein Size: 497
Molecular Weight:	56 kDa
Gene ID:	83716
NCBI Accession:	NM_031476 , NP_113664
UniProt:	Q9H0B8

Application Details

Application Notes:	Optimal working dilutions should be determined experimentally by the investigator.
Comment:	Antigen size: 497 AA
Restrictions:	For Research Use only

Handling

Format:	Liquid
Concentration:	Lot specific
Buffer:	Liquid. Purified antibody supplied in 1x PBS buffer with 0.09 % (w/v) sodium azide and 2 % sucrose.
Preservative:	Sodium azide
Precaution of Use:	This product contains Sodium azide: a POISONOUS AND HAZARDOUS SUBSTANCE which should be handled by trained staff only.
Handling Advice:	Avoid repeated freeze-thaw cycles.
Storage:	-20 °C
Storage Comment:	For short term use, store at 2-8°C up to 1 week. For long term storage, store at -20°C in small aliquots to prevent freeze-thaw cycles.



Western Blotting

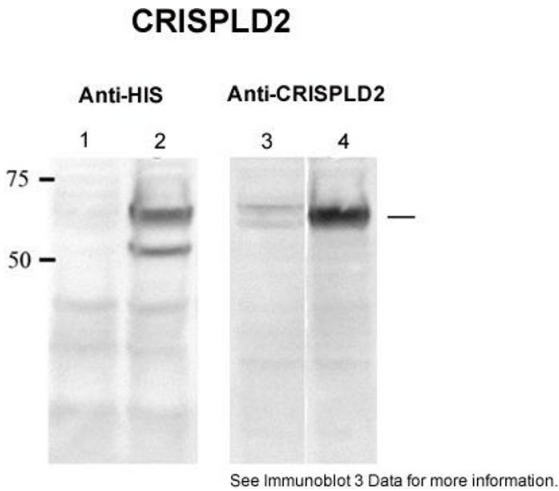
Image 1. Sample Type: 1. Human Lung Fibroblast cells (40ug)
2. Mouse lung cells (40ug)

Primary dilution: 1:2000

Secondary Antibody: Anti-rabbit IgG horseradish peroxidase

Secondary dilution: 1:1000

Image Submitted by: Xinlei Chen
McGill University



Western Blotting

Image 2. Sample type: 1. and 3. HEK293 (40ug)
2. and 4. HEK293 + CRISPLD2 (40ug)

Primary dilution: 1:2000

Secondary Antibody: Anti-rabbit IgG horseradish peroxidase,

Secondary dilution: 1: 1000

Image Submitted by: Xinlei Chen
McGill University



Western Blotting

Image 3. WB Suggested Anti-CRISPLD2 Antibody Titration:
0.2-1 ug/ml Positive Control: Jurkat cell lysate