

Datasheet for ABIN2784009

anti-PCDHA3 antibody (N-Term)[Go to Product page](#)**1** Image

Overview

| | |
|----------------------|--|
| Quantity: | 100 µL |
| Target: | PCDHA3 |
| Binding Specificity: | N-Term |
| Reactivity: | Human, Mouse, Horse, Cow, Guinea Pig, Rat, Dog |
| Host: | Rabbit |
| Clonality: | Polyclonal |
| Conjugate: | This PCDHA3 antibody is un-conjugated |
| Application: | Western Blotting (WB) |

Product Details

| | |
|-----------------------|--|
| Immunogen: | The immunogen is a synthetic peptide directed towards the N terminal region of human PCDHA3 |
| Sequence: | LFSWREDPGA QCLLLSLLLL AASEVGSGQL HYSVSEEAKH GTFVGRIAQD |
| Predicted Reactivity: | Cow: 100%, Dog: 93%, Guinea Pig: 93%, Horse: 100%, Human: 100%, Mouse: 93%, Rat: 93% |
| Characteristics: | This is a rabbit polyclonal antibody against PCDHA3. It was validated on Western Blot using a cell lysate as a positive control. |
| Purification: | Affinity Purified |

Target Details

| | |
|---------|--------|
| Target: | PCDHA3 |
|---------|--------|

Target Details

| | |
|-------------------|---|
| Alternative Name: | PCDHA3 (PCDHA3 Products) |
| Background: | <p>PCDHA3 is a single-pass type I membrane protein. It contains 6 cadherin domains. PCDHA3 is a potential calcium-dependent cell-adhesion protein. It may be involved in the establishment and maintenance of specific neuronal connections in the brain. This gene is a member of the protocadherin alpha gene cluster, one of three related gene clusters tandemly linked on chromosome five that demonstrate an unusual genomic organization similar to that of B-cell and T-cell receptor gene clusters. The alpha gene cluster is composed of 15 cadherin superfamily genes related to the mouse CNR genes and consists of 13 highly similar and 2 more distantly related coding sequences. The tandem array of 15 N-terminal exons, or variable exons, are followed by downstream C-terminal exons, or constant exons, which are shared by all genes in the cluster. The large, uninterrupted N-terminal exons each encode six cadherin ectodomains while the C-terminal exons encode the cytoplasmic domain. These neural cadherin-like cell adhesion proteins are integral plasma membrane proteins that most likely play a critical role in the establishment and function of specific cell-cell connections in the brain. Alternative splicing has been observed and additional variants have been suggested but their full-length nature has yet to be determined.</p> <p>Alias Symbols: MGC141669, PCDH-ALPHA3</p> <p>Protein Size: 950</p> |
| Molecular Weight: | 99 kDa |
| Gene ID: | 56145 |
| NCBI Accession: | NM_018906 , NP_061729 |
| UniProt: | Q9Y5H8 |

Application Details

| | |
|--------------------|--|
| Application Notes: | Optimal working dilutions should be determined experimentally by the investigator. |
| Comment: | Antigen size: 950 AA |
| Restrictions: | For Research Use only |

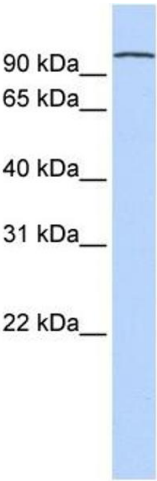
Handling

| | |
|----------------|--|
| Format: | Liquid |
| Concentration: | Lot specific |
| Buffer: | Liquid. Purified antibody supplied in 1x PBS buffer with 0.09 % (w/v) sodium azide and 2 % |

Handling

| | |
|--------------------|---|
| | sucrose. |
| Preservative: | Sodium azide |
| Precaution of Use: | This product contains Sodium azide: a POISONOUS AND HAZARDOUS SUBSTANCE which should be handled by trained staff only. |
| Handling Advice: | Avoid repeated freeze-thaw cycles. |
| Storage: | -20 °C |
| Storage Comment: | For short term use, store at 2-8°C up to 1 week. For long term storage, store at -20°C in small aliquots to prevent freeze-thaw cycles. |

Images



Western Blotting

Image 1. WB Suggested Anti-PCDHA3 Antibody Titration: 0.2-1 ug/ml ELISA Titer: 1:62500 Positive Control: Human Lung