

Datasheet for ABIN2784013
anti-FTHL17 antibody (N-Term)[Go to Product page](#)

1 Image

Overview

Quantity:	100 µL
Target:	FTHL17
Binding Specificity:	N-Term
Reactivity:	Human
Host:	Rabbit
Clonality:	Polyclonal
Application:	Western Blotting (WB)

Product Details

Immunogen:	The immunogen is a synthetic peptide directed towards the N terminal region of human FTHL17
Sequence:	MAFYFNRDDV ALENFFRYFL RLSDDKMEHA QKLMRLQNLR GGHICLHDIR
Predicted Reactivity:	Human: 100%
Characteristics:	This is a rabbit polyclonal antibody against FTHL17. It was validated on Western Blot using a cell lysate as a positive control.
Purification:	Affinity Purified

Target Details

Target:	FTHL17
Alternative Name:	FTHL17 (FTHL17 Products)

Target Details

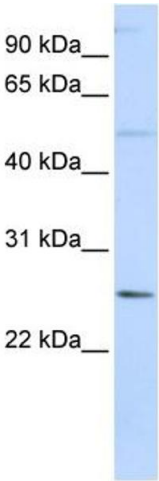
Background:	<p>This gene is similar to a mouse gene that encodes a ferritin heavy polypeptide-like protein. This gene is similar to a mouse gene that encodes a ferritin heavy polypeptide-like protein.</p> <p>Alias Symbols: CT38</p> <p>Protein Size: 183</p>
Molecular Weight:	21 kDa
Gene ID:	53940
NCBI Accession:	NM_031894 , NP_114100
UniProt:	Q9BXU8
Pathways:	Transition Metal Ion Homeostasis

Application Details

Application Notes:	Optimal working dilutions should be determined experimentally by the investigator.
Comment:	Antigen size: 183 AA
Restrictions:	For Research Use only

Handling

Format:	Liquid
Concentration:	Lot specific
Buffer:	Liquid. Purified antibody supplied in 1x PBS buffer with 0.09 % (w/v) sodium azide and 2 % sucrose.
Preservative:	Sodium azide
Precaution of Use:	This product contains Sodium azide: a POISONOUS AND HAZARDOUS SUBSTANCE which should be handled by trained staff only.
Handling Advice:	Avoid repeated freeze-thaw cycles.
Storage:	-20 °C
Storage Comment:	For short term use, store at 2-8°C up to 1 week. For long term storage, store at -20°C in small aliquots to prevent freeze-thaw cycles.



Western Blotting

Image 1. WB Suggested Anti-FTHL17 Antibody Titration:
0.2-1 ug/ml ELISA Titer: 1:312500 Positive Control: 721_B
cell lysate