



[Go to Product page](#)

Datasheet for ABIN2784029
anti-SGK196 antibody (N-Term)

2 Images

Overview

Quantity:	100 µL
Target:	SGK196
Binding Specificity:	N-Term
Reactivity:	Human, Mouse, Rat, Rabbit, Dog, Guinea Pig, Cow
Host:	Rabbit
Clonality:	Polyclonal
Conjugate:	This SGK196 antibody is un-conjugated
Application:	Western Blotting (WB)

Product Details

Immunogen:	The immunogen is a synthetic peptide directed towards the N terminal region of human FLJ23356
Sequence:	CEELRTEVRQ LKRVGEGAVK RVFLSEWKEH KVALSQLTSL EMKDDFLHGL
Predicted Reactivity:	Cow: 93%, Dog: 86%, Guinea Pig: 93%, Human: 100%, Mouse: 100%, Rabbit: 100%, Rat: 93%
Characteristics:	This is a rabbit polyclonal antibody against FLJ23356. It was validated on Western Blot using a cell lysate as a positive control.
Purification:	Affinity Purified

Target Details

Target:	SGK196
---------	--------

Target Details

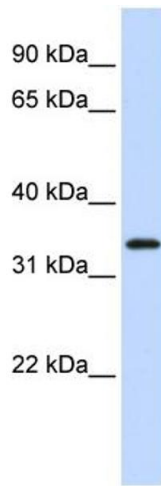
Abstract:	SGK196 Products
Background:	The exact function of FLJ23356 remains unknown. Alias Symbols: MGC126597, FLJ23356 Protein Interaction Partner: UBC, BMPR1B, TGFBR1, Protein Size: 350
Molecular Weight:	40 kDa
Gene ID:	84197
NCBI Accession:	NM_032237 , NP_115613
UniProt:	Q9H5K3

Application Details

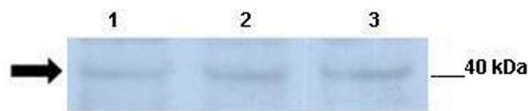
Application Notes:	Optimal working dilutions should be determined experimentally by the investigator.
Comment:	Antigen size: 350 AA
Restrictions:	For Research Use only

Handling

Format:	Liquid
Concentration:	Lot specific
Buffer:	Liquid. Purified antibody supplied in 1x PBS buffer with 0.09 % (w/v) sodium azide and 2 % sucrose.
Preservative:	Sodium azide
Precaution of Use:	This product contains Sodium azide: a POISONOUS AND HAZARDOUS SUBSTANCE which should be handled by trained staff only.
Handling Advice:	Avoid repeated freeze-thaw cycles.
Storage:	-20 °C
Storage Comment:	For short term use, store at 2-8°C up to 1 week. For long term storage, store at -20°C in small aliquots to prevent freeze-thaw cycles.



FLJ23356



See Immunoblot 2 Data and Customer Feedback for more Information

Western Blotting

Image 1. WB Suggested Anti-FLJ23356 Antibody Titration: 0.2-1 ug/ml ELISA Titer: 1:312500 Positive Control: 721_B cell lysate

Western Blotting

Image 2. Lanes: Lane 1: 30ug mouse renal epithelial lysate Lane 2: 30ug mouse renal epithelial lysate Lane 3: 30ug mouse renal epithelial lysate Primary Antibody Dilution: 1:500 Secondary Antibody: Anti-rabbit-HRP Secondary Antibody Dilution: 1:2500 Gene Name: FLJ23356 Submitted by: Dr. JUNMING FAN,ECU