



[Go to Product page](#)

Datasheet for ABIN2784037

anti-NMES1 antibody (N-Term)

1 Image

1 Publication

Overview

Quantity:	100 µL
Target:	NMES1 (C15ORF48)
Binding Specificity:	N-Term
Reactivity:	Human, Dog, Cow, Guinea Pig, Horse, Mouse, Rabbit, Rat, Zebrafish (Danio rerio)
Host:	Rabbit
Clonality:	Polyclonal
Conjugate:	This NMES1 antibody is un-conjugated
Application:	Western Blotting (WB)

Product Details

Sequence:	VAAGGASSFA VYSLWKTDVI LDRKKNPEPW ETVDPTVPQK LITINQQWKP
Predicted Reactivity:	Cow: 79%, Dog: 79%, Guinea Pig: 93%, Horse: 79%, Human: 100%, Mouse: 93%, Rabbit: 86%, Rat: 93%, Zebrafish: 79%
Characteristics:	This is a rabbit polyclonal antibody against C15orf48. It was validated on Western Blot.
Purification:	Affinity Purified

Target Details

Target:	NMES1 (C15ORF48)
Alternative Name:	C15orf48 (C15ORF48 Products)
Background:	This gene was identified by its low or completely missing expression in esophageal squamous

Target Details

cell carcinomas. Normal expression of the gene occurs in the esophagus, stomach, small intestine, colon and placenta. Alternatively spliced transcript variants that encode the same protein have been identified.

Alias Symbols: FLJ22645, FOAP-11, MGC32925, NMES1

Protein Interaction Partner: TSSK3, ABL2,

Protein Size: 83

Molecular Weight: 9 kDa

Gene ID: 84419

NCBI Accession: [NM_032413](#), [NP_115789](#)

Application Details

Application Notes: Optimal working dilutions should be determined experimentally by the investigator.

Comment: Antigen size: 83 AA

Restrictions: For Research Use only

Handling

Format: Liquid

Concentration: Lot specific

Buffer: Liquid. Purified antibody supplied in 1x PBS buffer with 0.09 % (w/v) sodium azide and 2 % sucrose.

Preservative: Sodium azide

Precaution of Use: This product contains Sodium azide: a POISONOUS AND HAZARDOUS SUBSTANCE which should be handled by trained staff only.

Handling Advice: Avoid repeated freeze-thaw cycles.

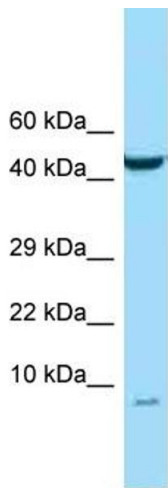
Storage: -20 °C

Storage Comment: For short term use, store at 2-8°C up to 1 week. For long term storage, store at -20°C in small aliquots to prevent freeze-thaw cycles.

Publications

Product cited in: Clayton, Daley, MacDonald, Fernandez-Vizarra, Bottegoni, ONeil, Major, Griffin, Zhuang,

Adewoye, Woolcock, Jones, Goodyear, Elmesmari, Filer, Tennant, Alivernini, Buckley, Pitceathly et al.: "Inflammation causes remodeling of mitochondrial cytochrome c oxidase mediated by the bifunctional gene C15orf48. ..." in: **Science advances**, Vol. 7, Issue 50, pp. eabl5182, (2021) ([PubMed](#)).



Rabbit Anti-C15orf48 Antibody
Catalog Number: ARP50069
Lot Number: QC29456
Lane: PANC1 Cell Lysate

Antibody Titration: 1.0µg/ml
Gel Concentration: 10-20%

Western Blotting

Image 1.