

Datasheet for ABIN2784041
anti-ST6GAL2 antibody (C-Term)[Go to Product page](#)

1 Image

Overview

Quantity:	100 µL
Target:	ST6GAL2
Binding Specificity:	C-Term
Reactivity:	Human, Mouse, Cow, Dog, Guinea Pig, Pig, Rabbit, Rat, Horse, Zebrafish (Danio rerio)
Host:	Rabbit
Clonality:	Polyclonal
Conjugate:	This ST6GAL2 antibody is un-conjugated
Application:	Western Blotting (WB)

Product Details

Immunogen:	The immunogen is a synthetic peptide corresponding to a region of Mouse
Sequence:	RGLSSCAVVM SAGAILNSSL GEEIDSHDAV LRFNSAPTRG YEKDVGNKTT
Predicted Reactivity:	Cow: 100%, Dog: 100%, Guinea Pig: 86%, Horse: 79%, Human: 100%, Mouse: 100%, Pig: 100%, Rabbit: 100%, Rat: 100%, Zebrafish: 93%
Characteristics:	This is a rabbit polyclonal antibody against St6gal2. It was validated on Western Blot.
Purification:	Affinity Purified

Target Details

Target:	ST6GAL2
Alternative Name:	St6gal2 (ST6GAL2 Products)

Target Details

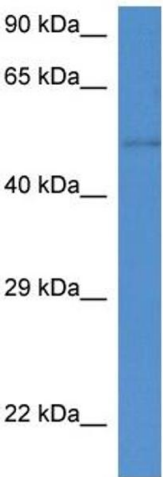
Background:	The function of this protein remains unknown. Alias Symbols: C230064G14Rik, St6galII, mKIAA1877 Protein Size: 438
Molecular Weight:	50 kDa
Gene ID:	240119
NCBI Accession:	NM_172829 , NP_766417
UniProt:	B2RQY9

Application Details

Application Notes:	Optimal working dilutions should be determined experimentally by the investigator.
Comment:	Antigen size: 438 AA
Restrictions:	For Research Use only

Handling

Format:	Liquid
Concentration:	Lot specific
Buffer:	Liquid. Purified antibody supplied in 1x PBS buffer with 0.09 % (w/v) sodium azide and 2 % sucrose.
Preservative:	Sodium azide
Precaution of Use:	This product contains Sodium azide: a POISONOUS AND HAZARDOUS SUBSTANCE which should be handled by trained staff only.
Handling Advice:	Avoid repeated freeze-thaw cycles.
Storage:	-20 °C
Storage Comment:	For short term use, store at 2-8°C up to 1 week. For long term storage, store at -20°C in small aliquots to prevent freeze-thaw cycles.



Western Blotting

Image 1. WB Suggested Anti-St6gal2 Antibody Titration:
1.0 ug/ml Positive Control: Mouse Small Intestine