



[Go to Product page](#)

Datasheet for ABIN2784044  
**anti-ABHD1 antibody (Middle Region)**

2 Images

### Overview

Quantity:	100 µL
Target:	ABHD1
Binding Specificity:	Middle Region
Reactivity:	Human, Mouse, Rat, Cow, Dog, Guinea Pig, Horse, Rabbit
Host:	Rabbit
Clonality:	Polyclonal
Application:	Western Blotting (WB)

### Product Details

Immunogen:	The immunogen is a synthetic peptide directed towards the middle region of human ABHD1
Sequence:	GLVAALTLSA CWDSFETTRS LETPLNSLLF NQPLTAGLCQ LVERNRKVIE
Predicted Reactivity:	Cow: 86%, Dog: 93%, Guinea Pig: 93%, Horse: 92%, Human: 100%, Mouse: 100%, Rabbit: 93%, Rat: 100%
Characteristics:	This is a rabbit polyclonal antibody against ABHD1. It was validated on Western Blot.
Purification:	Affinity Purified

### Target Details

Target:	ABHD1
Alternative Name:	ABHD1 ( <a href="#">ABHD1 Products</a> )
Background:	This gene is a member of the AB hydrolase superfamily and encodes a protein with an

## Target Details

---

alpha/beta hydrolase fold. This domain is common to a number of hydrolytic enzymes of widely differing phylogenetic origins and catalytic functions.

Alias Symbols: FLJ36128, LABH1

Protein Interaction Partner: CCDC155,

Protein Size: 405

---

Molecular Weight: 45 kDa

---

Gene ID: 84696

---

NCBI Accession: [NM\\_032604](#), [NP\\_115993](#)

---

UniProt: [Q96SE0](#)

## Application Details

---

Application Notes: Optimal working dilutions should be determined experimentally by the investigator.

---

Comment: Antigen size: 405 AA

---

Restrictions: For Research Use only

## Handling

---

Format: Liquid

---

Concentration: Lot specific

---

Buffer: Liquid. Purified antibody supplied in 1x PBS buffer with 0.09 % (w/v) sodium azide and 2 % sucrose.

---

Preservative: Sodium azide

---

Precaution of Use: This product contains Sodium azide: a POISONOUS AND HAZARDOUS SUBSTANCE which should be handled by trained staff only.

---

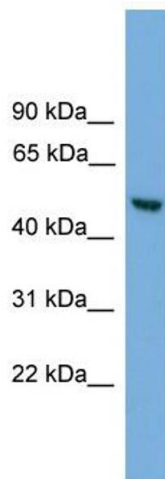
Handling Advice: Avoid repeated freeze-thaw cycles.

---

Storage: -20 °C

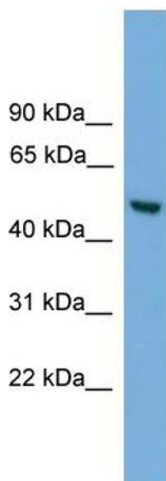
---

Storage Comment: For short term use, store at 2-8°C up to 1 week. For long term storage, store at -20°C in small aliquots to prevent freeze-thaw cycles.



### Western Blotting

**Image 1.** WB Suggested Anti-ABHD1 Antibody Titration: 0.2-1 ug/ml ELISA Titer: 1:1562500 Positive Control: HepG2 cell lysate



Rabbit Anti-ABHD1 Antibody  
Catalog Number: ARP50088  
Lot Number: QC29805  
Lane: HepG2 Cell Lysate

Antibody Titration: 1.0µg/ml  
Gel Concentration: 12%

### Western Blotting

**Image 2.** WB Suggested Anti-ABHD1 Antibody Titration: 0.2-1 µg/mL ELISA Titer: 1:1562500 Positive Control: HepG2 cell lysate