

Datasheet for ABIN2784045  
**anti-C4orf49 antibody (C-Term)**



[Go to Product page](#)

1 Image

## Overview

Quantity:	100 µL
Target:	C4orf49
Binding Specificity:	C-Term
Reactivity:	Human
Host:	Rabbit
Clonality:	Polyclonal
Conjugate:	This C4orf49 antibody is un-conjugated
Application:	Western Blotting (WB)

## Product Details

Immunogen:	The immunogen is a synthetic peptide directed towards the C-terminal region of Human MGARP
Sequence:	EAVTIDNDKD TTKNETSDEY AELEEENSPA ESESSAGDDL QEEASVGSEA
Predicted Reactivity:	Human: 100%
Characteristics:	This is a rabbit polyclonal antibody against MGARP. It was validated on Western Blot.
Purification:	Affinity Purified

## Target Details

Target:	C4orf49
Alternative Name:	MGARP ( <a href="#">C4orf49 Products</a> )

## Target Details

---

**Background:** MGARP plays a role in the trafficking of mitochondria along microtubules. It regulates the kinesin-mediated axonal transport of mitochondria to nerve terminals along microtubules during hypoxia. It participates in the translocation of TRAK2/GRIF1 from the cytoplasm to the mitochondrion. It also plays a role in steroidogenesis through maintenance of mitochondrial abundance and morphology.

Alias Symbols: C4orf49, CESP-1, HUMMR, OSAP

Protein Interaction Partner: EGFR,

Protein Size: 240

---

**Molecular Weight:** 26 kDa

---

**Gene ID:** 84709

---

**NCBI Accession:** [NM\\_032623](#), [NP\\_116012](#)

---

**UniProt:** [Q8TDB4](#)

---

## Application Details

---

**Restrictions:** For Research Use only

---

## Handling

---

**Format:** Liquid

---

**Concentration:** 1 mg/mL

---

**Buffer:** Liquid. Purified antibody supplied in 1x PBS buffer with 0.09 % (w/v) sodium azide and 2 % sucrose.

---

**Preservative:** Sodium azide

---

**Precaution of Use:** This product contains Sodium azide: a POISONOUS AND HAZARDOUS SUBSTANCE which should be handled by trained staff only.

---

**Handling Advice:** Avoid repeat freeze-thaw cycles.

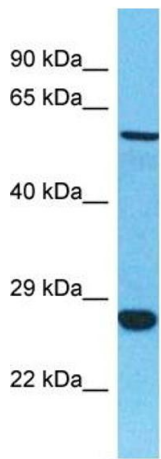
---

**Storage:** -20 °C

---

**Storage Comment:** For short term use, store at 2-8°C up to 1 week. For long term storage, store at -20°C in small aliquots to prevent freeze-thaw cycles.

---



Host: Rabbit  
Target Name: MGARP  
Sample Tissue: Uterus Tumor Lysate  
Antibody Dilution: 1.0 $\mu$ g/ml

#### Western Blotting

**Image 1.** Host: Rabbit Target Name: MGARP Sample  
Tissue: Human Uterus Tumor Antibody Dilution: 1ug/ml