



[Go to Product page](#)

Datasheet for ABIN2784048
anti-BSCL2 antibody (C-Term)

2 Images

Overview

Quantity:	100 µL
Target:	BSCL2
Binding Specificity:	C-Term
Reactivity:	Human, Mouse, Rat, Cow, Dog, Rabbit, Horse
Host:	Rabbit
Clonality:	Polyclonal
Conjugate:	This BSCL2 antibody is un-conjugated
Application:	Western Blotting (WB)

Product Details

Immunogen:	The immunogen is a synthetic peptide directed towards the C terminal region of human BSCL2
Sequence:	QEESTPQSDV TEDGESPEDP SGTEGQLSEE EKPDQQPLSG EEELEPEAS
Predicted Reactivity:	Cow: 86%, Dog: 86%, Horse: 92%, Human: 100%, Mouse: 100%, Rabbit: 100%, Rat: 100%
Characteristics:	This is a rabbit polyclonal antibody against BSCL2. It was validated on Western Blot.
Purification:	Affinity Purified

Target Details

Target:	BSCL2
Alternative Name:	BSCL2 (BSCL2 Products)
Background:	This gene encodes protein seipin, which is located in the endoplasmic reticulum and may be

Target Details

important for lipid droplet morphology. Mutations in this gene have been associated with congenital generalized lipodystrophy type 2 or Berardinelli-Seip syndrome, a rare autosomal recessive disease characterized by a near absence of adipose tissue and severe insulin resistance. Alternatively spliced transcript variants encoding different isoforms have been found for this gene.

Alias Symbols: GNG3LG, HMN5, MGC4694, SPG17

Protein Interaction Partner: SMLR1, SMIM3, PLEKHF2, TMEM19, NSG1, SUMO2, SUMO3, Hoxa1, UBC, CANX, USE1,

Protein Size: 462

Molecular Weight:	51 kDa
Gene ID:	26580
NCBI Accession:	NM_001122955 , NP_001116427
UniProt:	Q96G97

Application Details

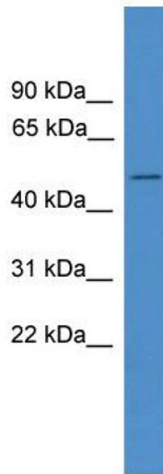
Application Notes:	Optimal working dilutions should be determined experimentally by the investigator.
Comment:	Antigen size: 462 AA
Restrictions:	For Research Use only

Handling

Format:	Liquid
Concentration:	Lot specific
Buffer:	Liquid. Purified antibody supplied in 1x PBS buffer with 0.09 % (w/v) sodium azide and 2 % sucrose.
Preservative:	Sodium azide
Precaution of Use:	This product contains Sodium azide: a POISONOUS AND HAZARDOUS SUBSTANCE which should be handled by trained staff only.
Handling Advice:	Avoid repeated freeze-thaw cycles.
Storage:	-20 °C
Storage Comment:	For short term use, store at 2-8°C up to 1 week. For long term storage, store at -20°C in small

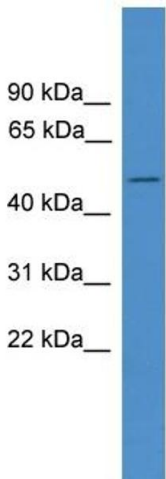
aliquots to prevent freeze-thaw cycles.

Images



Western Blotting

Image 1. WB Suggested Anti-BSCL2 Antibody Titration: 0.2-1 ug/ml ELISA Titer: 1:312500 Positive Control: U937 cell lysate



Rabbit Anti-BSCL2 Antibody
Catalog Number: ARP50102
Lot Number: QC29808
Lane: U937 Cell Lysate

Antibody Titration: 1.0µg/ml
Gel Concentration: 12%

Western Blotting

Image 2. WB Suggested Anti-BSCL2 Antibody Titration: 0.2-1 µg/mL ELISA Titer: 1:12500 Positive Control: U937 cell lysate