

Datasheet for ABIN2784051  
**anti-Bestrophin 3 antibody (C-Term)**[Go to Product page](#)

## 2 Images

## Overview

Quantity:	100 µL
Target:	Bestrophin 3 (BEST3)
Binding Specificity:	C-Term
Reactivity:	Human, Mouse, Cow, Rat, Rabbit, Dog, Horse, Pig, Guinea Pig
Host:	Rabbit
Clonality:	Polyclonal
Conjugate:	This Bestrophin 3 antibody is un-conjugated
Application:	Western Blotting (WB)

## Product Details

Immunogen:	The immunogen is a synthetic peptide directed towards the C terminal region of human BEST3
Sequence:	VPFIWFGNLA TKARNEGRIR DSVDLQSLMT EMNRYRSWCS LLFGYDWVGI
Predicted Reactivity:	Cow: 100%, Dog: 100%, Guinea Pig: 93%, Horse: 100%, Human: 100%, Mouse: 100%, Pig: 100%, Rabbit: 100%, Rat: 100%
Characteristics:	This is a rabbit polyclonal antibody against BEST3. It was validated on Western Blot.
Purification:	Affinity Purified

## Target Details

Target:	Bestrophin 3 (BEST3)
Alternative Name:	BEST3 ( <a href="#">BEST3 Products</a> )

## Target Details

Background:	<p>BEST3 belongs to the bestrophin family of anion channels, which includes BEST1 (MIM 607854), the gene mutant in vitelliform macular dystrophy (VMD, MIM 153700), and 2 other BEST1-like genes, BEST2 (MIM 607335) and BEST4 (MIM 607336). Bestrophins are transmembrane (TM) proteins that share a homology region containing a high content of aromatic residues, including an invariant arg-phe-pro (RFP) motif. The bestrophin genes share a conserved gene structure, with almost identical sizes of the 8 RFP-TM domain-encoding exons and highly conserved exon-intron boundaries.</p> <p>Alias Symbols: MGC13168, MGC40411, VMD2L3</p> <p>Protein Size: 455</p>
Molecular Weight:	51 kDa
Gene ID:	144453
NCBI Accession:	<a href="#">NM_152439</a> , <a href="#">NP_689652</a>
UniProt:	<a href="#">B5MDI8</a>

## Application Details

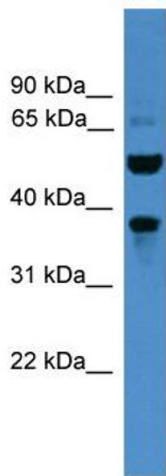
Application Notes:	Optimal working dilutions should be determined experimentally by the investigator.
Comment:	Antigen size: 455 AA
Restrictions:	For Research Use only

## Handling

Format:	Liquid
Concentration:	Lot specific
Buffer:	Liquid. Purified antibody supplied in 1x PBS buffer with 0.09 % (w/v) sodium azide and 2 % sucrose.
Preservative:	Sodium azide
Precaution of Use:	This product contains Sodium azide: a POISONOUS AND HAZARDOUS SUBSTANCE which should be handled by trained staff only.
Handling Advice:	Avoid repeated freeze-thaw cycles.
Storage:	-20 °C
Storage Comment:	For short term use, store at 2-8°C up to 1 week. For long term storage, store at -20°C in small

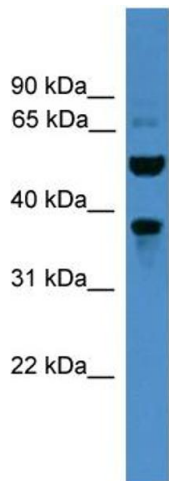
aliquots to prevent freeze-thaw cycles.

Images



**Western Blotting**

**Image 1.** WB Suggested Anti-BEST3 Antibody Titration: 0.2-1 ug/ml ELISA Titer: 1:1562500 Positive Control: PANC1 cell lysate



Rabbit Anti-BEST3 Antibody  
Catalog Number: ARP50108  
Lot Number: QC23583  
Lane: PANC1 Cell Lysate

Antibody Titration: 1.0µg/ml  
Gel Concentration: 12%

**Western Blotting**

**Image 2.** WB Suggested Anti-BEST3 Antibody Titration: 0.2-1 µg/mL ELISA Titer: 1:1562500 Positive Control: PANC1 cell lysate