

Datasheet for ABIN2784054
anti-FCRLA antibody (C-Term)[Go to Product page](#)

1 Image

Overview

Quantity:	100 µL
Target:	FCRLA
Binding Specificity:	C-Term
Reactivity:	Human
Host:	Rabbit
Clonality:	Polyclonal
Conjugate:	This FCRLA antibody is un-conjugated
Application:	Western Blotting (WB)

Product Details

Immunogen:	The immunogen is a synthetic peptide directed towards the C terminal region of human FCRLA
Sequence:	MPDPHLYHQM GLLLKHMQDV RVLLGHLLME LRELSGHRKP GTTKATAE
Predicted Reactivity:	Human: 100%
Characteristics:	This is a rabbit polyclonal antibody against FCRLA. It was validated on Western Blot using a cell lysate as a positive control.
Purification:	Affinity Purified

Target Details

Target:	FCRLA
Alternative Name:	FCRLA (FCRLA Products)

Target Details

Background:	<p>Receptors for the Fc fragment of IgG, or FCGRs, are cell surface glycoproteins of the Ig superfamily (IgSF). These receptors mediate phagocytosis of IgG-coated pathogens and promote activation of effector cells, leading to inflammatory responses and antibody-mediated cellular cytotoxicity. FCRLA may be implicated in B-cell differentiation and lymphomagenesis. Receptors for the Fc fragment of IgG, or FCGRs (see MIM 146790), are cell surface glycoproteins of the Ig superfamily (IgSF). These receptors mediate phagocytosis of IgG-coated pathogens and promote activation of effector cells, leading to inflammatory responses and antibody-mediated cellular cytotoxicity. All FCGR genes map to human chromosome 1. Additional genes in this region, including FREB, encode FCGR homologs that are selectively expressed in B cells and may be implicated in B-cell development and lymphomagenesis. [supplied by OMIM]. PRIMARYREFSEQ_SPAN PRIMARY_IDENTIFIER PRIMARY_SPAN COMP 1-742 BM471887.1 3-744 743-1338 BC006521.2 558-1153 1339-1684 BX112608.1 318-663 1685-2357 BX649184.1 2243-2915</p> <p>Alias Symbols: FCRL, FCRLM1, FCRLX, FCRLb, FCRLc1, FCRLc2, FCRLd, FCRLe, FREB, MGC4595, RP11-474116.5, FCRX, FCRL1</p> <p>Protein Size: 376</p>
-------------	--

Molecular Weight:	41 kDa
-------------------	--------

Gene ID:	84824
----------	-------

NCBI Accession:	NM_032738 , NP_116127
-----------------	---

UniProt:	Q7L513
----------	------------------------

Application Details

Application Notes:	Optimal working dilutions should be determined experimentally by the investigator.
--------------------	--

Comment:	Antigen size: 376 AA
----------	----------------------

Restrictions:	For Research Use only
---------------	-----------------------

Handling

Format:	Liquid
---------	--------

Concentration:	Lot specific
----------------	--------------

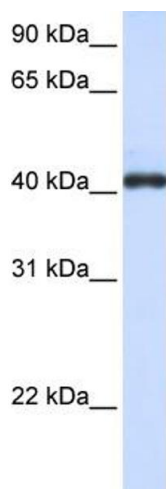
Buffer:	Liquid. Purified antibody supplied in 1x PBS buffer with 0.09 % (w/v) sodium azide and 2 % sucrose.
---------	---

Preservative:	Sodium azide
---------------	--------------

Handling

Precaution of Use:	This product contains Sodium azide: a POISONOUS AND HAZARDOUS SUBSTANCE which should be handled by trained staff only.
Handling Advice:	Avoid repeated freeze-thaw cycles.
Storage:	-20 °C
Storage Comment:	For short term use, store at 2-8°C up to 1 week. For long term storage, store at -20°C in small aliquots to prevent freeze-thaw cycles.

Images



Western Blotting

Image 1. WB Suggested Anti-FCRLA Antibody Titration: 0.2-1 ug/ml ELISA Titer: 1:62500 Positive Control: Hela cell lysate