



Datasheet for ABIN2784056  
**anti-TMEM25 antibody (C-Term)**



[Go to Product page](#)

1 Image

Overview

Quantity:	100 µL
Target:	TMEM25
Binding Specificity:	C-Term
Reactivity:	Human, Mouse, Rat, Pig, Rabbit, Cow, Dog, Guinea Pig, Horse
Host:	Rabbit
Clonality:	Polyclonal
Application:	Western Blotting (WB)

Product Details

Immunogen:	The immunogen is a synthetic peptide directed towards the C-terminal region of Mouse Tmem25
Sequence:	DVGVTSASLP APGLLATRIE VPLLGIVVAG GLALGTLVGF STLVACLVC R
Predicted Reactivity:	Cow: 93%, Dog: 100%, Guinea Pig: 93%, Horse: 100%, Human: 100%, Mouse: 100%, Pig: 100%, Rabbit: 100%, Rat: 100%
Characteristics:	This is a rabbit polyclonal antibody against Tmem25. It was validated on Western Blot.
Purification:	Affinity Purified

Target Details

Target:	TMEM25
Alternative Name:	Tmem25 ( <a href="#">TMEM25 Products</a> )

## Target Details

---

Background: The function of this protein remains unknown.  
Alias Symbols: 0610039J01Rik, AI429491  
Protein Size: 365

---

Molecular Weight: 39 kDa

---

Gene ID: 71687

---

NCBI Accession: [NM\\_027865](#), [NP\\_082141](#)

---

UniProt: [Q9DCF1](#)

---

## Application Details

---

Application Notes: Optimal working dilutions should be determined experimentally by the investigator.

---

Comment: Antigen size: 365 AA

---

Restrictions: For Research Use only

---

## Handling

---

Format: Liquid

---

Concentration: Lot specific

---

Buffer: Liquid. Purified antibody supplied in 1x PBS buffer with 0.09 % (w/v) sodium azide and 2 % sucrose.

---

Preservative: Sodium azide

---

Precaution of Use: This product contains Sodium azide: a POISONOUS AND HAZARDOUS SUBSTANCE which should be handled by trained staff only.

---

Handling Advice: Avoid repeated freeze-thaw cycles.

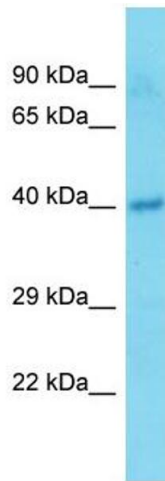
---

Storage: -20 °C

---

Storage Comment: For short term use, store at 2-8°C up to 1 week. For long term storage, store at -20°C in small aliquots to prevent freeze-thaw cycles.

---



### Western Blotting

**Image 1.** Host: Rabbit Target Name: Tmem25 Sample Type: Mouse Pancreas lysates Antibody Dilution: 1.0ug/ml