

Datasheet for ABIN2784060  
**anti-JAM3 antibody (N-Term)**



[Go to Product page](#)

1 Image

## Overview

|                      |  |
|----------------------|--|
| Quantity:            | 100 µL   |
| Target:              | JAM3   |
| Binding Specificity: | N-Term   |
| Reactivity:          | Human, Mouse, Rat, Cow, Dog, Guinea Pig, Horse, Rabbit |
| Host:                | Rabbit   |
| Clonality:           | Polyclonal   |
| Conjugate:           | This JAM3 antibody is un-conjugated                    |
| Application:         | Western Blotting (WB)                                  |

## Product Details

|                       |  |
|-----------------------|--|
| Immunogen:            | The immunogen is a synthetic peptide directed towards the N terminal region of human JAM3                                      |
| Sequence:             | SSNRTPVVQE FESVELSCII TDSQTSDPRI EWKKIQDEQT TYVFFDNKIQ   |
| Predicted Reactivity: | Cow: 93%, Dog: 93%, Guinea Pig: 100%, Horse: 93%, Human: 100%, Mouse: 100%, Rabbit: 93%, Rat: 93%                              |
| Characteristics:      | This is a rabbit polyclonal antibody against JAM3. It was validated on Western Blot using a cell lysate as a positive control. |
| Purification:         | Affinity Purified  |

## Target Details

|         |      |
|---------|------|
| Target: | JAM3 |
|---------|------|

## Target Details

|                   |   |
|-------------------|---|
| Alternative Name: | JAM3 ( <a href="#">JAM3 Products</a> )  |
| Background:       | <p>Tight junctions represent one mode of cell-to-cell adhesion in epithelial or endothelial cell sheets, forming continuous seals around cells and serving as a physical barrier to prevent solutes and water from passing freely through the paracellular space. JAM3, one member of the immunoglobulin superfamily, is localized in the tight junctions between high endothelial cells. Unlike other proteins in this family, this protein is unable to adhere to leukocyte cell lines and only forms weak homotypic interactions. JAM3 is a member of the junctional adhesion molecule protein family and acts as a receptor for another member of this family.</p> <p>Alias Symbols: FLJ14529, JAM-C, JAMC</p> <p>Protein Interaction Partner: JAM3, JAM2, UBC, PICK1, F2RL2, TJP1, ITGAX, ITGAM, PARD3,</p> <p>Protein Size: 259</p> |
| Molecular Weight: | 28 kDa  |
| Gene ID:          | 83700   |
| UniProt:          | <a href="#">Q9BX67</a> , <a href="#">B3KWG9</a>   |

## Application Details

|                    |  |
|--------------------|--|
| Application Notes: | Optimal working dilutions should be determined experimentally by the investigator. |
| Comment:           | Antigen size: 259 AA   |
| Restrictions:      | For Research Use only  |

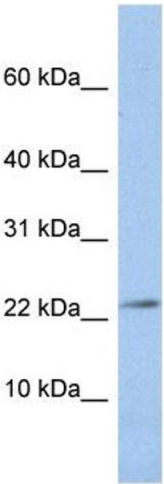
## Handling

|                    |  |
|--------------------|--|
| Format:            | Liquid   |
| Concentration:     | Lot specific   |
| Buffer:            | Liquid. Purified antibody supplied in 1x PBS buffer with 0.09 % (w/v) sodium azide and 2 % sucrose.                    |
| Preservative:      | Sodium azide   |
| Precaution of Use: | This product contains Sodium azide: a POISONOUS AND HAZARDOUS SUBSTANCE which should be handled by trained staff only. |
| Handling Advice:   | Avoid repeated freeze-thaw cycles.   |
| Storage:           | -20 °C   |

## Handling

Storage Comment: For short term use, store at 2-8°C up to 1 week. For long term storage, store at -20°C in small aliquots to prevent freeze-thaw cycles.

## Images



### Western Blotting

**Image 1.** WB Suggested Anti-JAM3 Antibody Titration: 0.2-1 ug/ml Positive Control: HepG2 cell lysate