

Datasheet for ABIN2784064
anti-DIRC2 antibody (Middle Region)



[Go to Product page](#)

1 Image

Overview

Quantity:	100 µL
Target:	DIRC2
Binding Specificity:	Middle Region
Reactivity:	Human, Rat, Mouse, Guinea Pig, Horse, Rabbit
Host:	Rabbit
Clonality:	Polyclonal
Conjugate:	This DIRC2 antibody is un-conjugated
Application:	Western Blotting (WB)

Product Details

Immunogen:	The immunogen is a synthetic peptide directed towards the middle region of human DIRC2
Sequence:	AAESSRAHIK DRIEAVLYAE FGVVCLIFSA TLAYFPPRPP LPPSVAAASQ
Predicted Reactivity:	Guinea Pig: 86%, Horse: 86%, Human: 100%, Mouse: 100%, Rabbit: 86%, Rat: 100%
Characteristics:	This is a rabbit polyclonal antibody against DIRC2. It was validated on Western Blot using a cell lysate as a positive control.
Purification:	Affinity Purified

Target Details

Target:	DIRC2
Alternative Name:	DIRC2 (DIRC2 Products)

Target Details

Background:	<p>DIRC2 is a membrane-bound protein from the major facilitator superfamily of transporters. Disruption of DIRC2 by translocation has been associated with haplo-insufficiency and renal cell carcinomas. Alternatively spliced transcript variants have been described, but their biological validity has not yet been determined. This gene encodes a membrane-bound protein from the major facilitator superfamily of transporters. Disruption of this gene by translocation has been associated with haplo-insufficiency and renal cell carcinomas. Alternatively spliced transcript variants have been described, but their biological validity has not yet been determined. Sequence Note: The RefSeq transcript and protein were derived from genomic sequence and transcripts to make the sequence consistent with the reference genome assembly. The genomic coordinates used for the transcript record were based on alignments.</p> <p>Alias Symbols: FLJ14784, RCC4</p> <p>Protein Size: 478</p>
Molecular Weight:	52 kDa
Gene ID:	84925
NCBI Accession:	NM_032839 , NP_116228
UniProt:	Q96SL1

Application Details

Application Notes:	Optimal working dilutions should be determined experimentally by the investigator.
Comment:	Antigen size: 478 AA
Restrictions:	For Research Use only

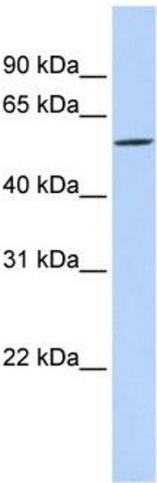
Handling

Format:	Liquid
Concentration:	Lot specific
Buffer:	Liquid. Purified antibody supplied in 1x PBS buffer with 0.09 % (w/v) sodium azide and 2 % sucrose.
Preservative:	Sodium azide
Precaution of Use:	This product contains Sodium azide: a POISONOUS AND HAZARDOUS SUBSTANCE which should be handled by trained staff only.
Handling Advice:	Avoid repeated freeze-thaw cycles.

Handling

Storage:	-20 °C
Storage Comment:	For short term use, store at 2-8°C up to 1 week. For long term storage, store at -20°C in small aliquots to prevent freeze-thaw cycles.

Images



Western Blotting

Image 1. WB Suggested Anti-DIRC2 Antibody Titration: 0.2-1 ug/ml ELISA Titer: 1:312500 Positive Control: MCF7 cell lysate