



[Go to Product page](#)

Datasheet for ABIN2784069

anti-DISP1 antibody (Middle Region)

2 Images

Overview

Quantity:	100 µL
Target:	DISP1
Binding Specificity:	Middle Region
Reactivity:	Human, Mouse, Rat, Horse, Pig, Rabbit, Zebrafish (Danio rerio)
Host:	Rabbit
Clonality:	Polyclonal
Conjugate:	This DISP1 antibody is un-conjugated
Application:	Western Blotting (WB)

Product Details

Immunogen:	The immunogen is a synthetic peptide directed towards the middle region of human DISP1
Sequence:	FVLCDVWNYT KFDKPHAETS ETVSITLQHA ALSMFVTSFT TAAAFYANYV
Predicted Reactivity:	Horse: 93%, Human: 100%, Mouse: 93%, Pig: 86%, Rabbit: 100%, Rat: 86%, Zebrafish: 79%
Characteristics:	This is a rabbit polyclonal antibody against DISP1. It was validated on Western Blot using a cell lysate as a positive control.
Purification:	Affinity Purified

Target Details

Target:	DISP1
Alternative Name:	DISP1 (DISP1 Products)

Target Details

Background: DISP1 functions in hedgehog (Hh) signaling. Regulates the release and extracellular accumulation of cholesterol-modified hedgehog proteins and is hence required for effective production of the Hh signal. The pattern of cellular proliferation and differentiation that leads to normal development of embryonic structures often depends upon the localized production of secreted protein signals. Cells surrounding the source of a particular signal respond in a graded manner according to the effective concentration of the signal, and this response produces the pattern of cell types constituting the mature structure. A novel segment-polarity gene known as dispatched has been identified in Drosophila and its protein product is required for normal Hedgehog (Hh) signaling. This gene is one of two human homologs of Drosophila dispatched and, based on sequence identity to its mouse counterpart, the encoded protein may play an essential role in Hh patterning activities in the early embryo.

Alias Symbols: DISPA, DKFZP434I0428, FLJ43740, MGC104180, MGC13130, MGC16796

Protein Interaction Partner: LAPTM5, UBC,

Protein Size: 1524

Molecular Weight: 171 kDa

Gene ID: 84976

NCBI Accession: [NM_032890](#), [NP_116279](#)

UniProt: [Q96F81](#)

Pathways: [Hedgehog Signaling](#)

Application Details

Application Notes: Optimal working dilutions should be determined experimentally by the investigator.

Comment: Antigen size: 1524 AA

Restrictions: For Research Use only

Handling

Format: Liquid

Concentration: Lot specific

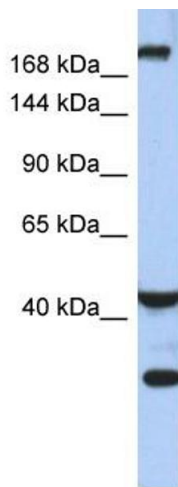
Buffer: Liquid. Purified antibody supplied in 1x PBS buffer with 0.09 % (w/v) sodium azide and 2 % sucrose.

Preservative: Sodium azide

Handling

Precaution of Use:	This product contains Sodium azide: a POISONOUS AND HAZARDOUS SUBSTANCE which should be handled by trained staff only.
Handling Advice:	Avoid repeated freeze-thaw cycles.
Storage:	-20 °C
Storage Comment:	For short term use, store at 2-8°C up to 1 week. For long term storage, store at -20°C in small aliquots to prevent freeze-thaw cycles.

Validation report #100030 for Western Blotting (WB)



Western Blotting

Image 1. WB Suggested Anti-DISP1 Antibody Titration: 0.2-1 ug/ml ELISA Titer: 1:1562500 Positive Control: Human Small Intestine



Western Blotting

Image 2. Host: Rabbit Target Name: DISP1 Sample Tissue: Human MDA-MB-435s Whole Cell Antibody Dilution: 1 ug/ml