

Datasheet for ABIN2784071

anti-SEC22C antibody (Middle Region)[Go to Product page](#)**1** Image

Overview

Quantity:	100 µL
Target:	SEC22C
Binding Specificity:	Middle Region
Reactivity:	Human, Mouse, Cow, Dog, Horse, Pig, Rabbit, Guinea Pig, Rat
Host:	Rabbit
Clonality:	Polyclonal
Conjugate:	This SEC22C antibody is un-conjugated
Application:	Western Blotting (WB)

Product Details

Immunogen:	The immunogen is a synthetic peptide directed towards the middle region of human SEC22C
Sequence:	FRMEPVTALG ILSLILNIMC AALNLIRGVH LAEHS LQVAH EEIGNILAFL
Predicted Reactivity:	Cow: 100%, Dog: 100%, Guinea Pig: 93%, Horse: 100%, Human: 100%, Mouse: 86%, Pig: 100%, Rabbit: 100%, Rat: 86%
Characteristics:	This is a rabbit polyclonal antibody against SEC22C. It was validated on Western Blot using a cell lysate as a positive control.
Purification:	Affinity Purified

Target Details

Target:	SEC22C
---------	--------

Target Details

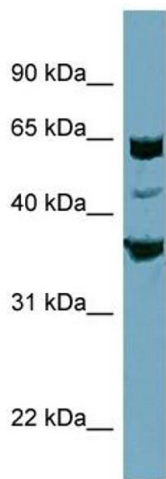
Alternative Name:	SEC22C (SEC22C Products)
Background:	<p>The protein encoded by this gene is a member of the SEC22 family of vesicle trafficking proteins. It is localized at the endoplasmic reticulum and it is thought to play a role in the early stages of the ER-Golgi protein trafficking. There are two alternat</p> <p>Alias Symbols: DKFZp761F2321, MGC13261, MGC5373, SEC22L3</p> <p>Protein Interaction Partner: FATE1, UBC,</p> <p>Protein Size: 303</p>
Molecular Weight:	34 kDa
Gene ID:	9117
NCBI Accession:	NM_015444 , NP_116752
UniProt:	Q9BRL7

Application Details

Application Notes:	Optimal working dilutions should be determined experimentally by the investigator.
Comment:	Antigen size: 303 AA
Restrictions:	For Research Use only

Handling

Format:	Liquid
Concentration:	Lot specific
Buffer:	Liquid. Purified antibody supplied in 1x PBS buffer with 0.09 % (w/v) sodium azide and 2 % sucrose.
Preservative:	Sodium azide
Precaution of Use:	This product contains Sodium azide: a POISONOUS AND HAZARDOUS SUBSTANCE which should be handled by trained staff only.
Handling Advice:	Avoid repeated freeze-thaw cycles.
Storage:	-20 °C
Storage Comment:	For short term use, store at 2-8°C up to 1 week. For long term storage, store at -20°C in small aliquots to prevent freeze-thaw cycles.



Western Blotting

Image 1. WB Suggested Anti-SEC22C Antibody Titration: 0.2-1 ug/ml ELISA Titer: 1:1562500 Positive Control: PANC1 cell lysate