

Datasheet for ABIN2784074
anti-PCDH15 antibody (N-Term)[Go to Product page](#)

1 Image

Overview

Quantity:	100 µL
Target:	PCDH15
Binding Specificity:	N-Term
Reactivity:	Human, Mouse, Rat, Cow, Guinea Pig, Rabbit, Dog
Host:	Rabbit
Clonality:	Polyclonal
Conjugate:	This PCDH15 antibody is un-conjugated
Application:	Western Blotting (WB)

Product Details

Immunogen:	The immunogen is a synthetic peptide directed towards the N terminal region of human PCDH15
Sequence:	HSIVVQVQCI NKKVGTIIYH EVRIVVRDRN DNSPTFKHES YYATVNELTP
Predicted Reactivity:	Cow: 100%, Dog: 93%, Guinea Pig: 100%, Human: 100%, Mouse: 100%, Rabbit: 100%, Rat: 100%
Characteristics:	This is a rabbit polyclonal antibody against PCDH15. It was validated on Western Blot using a cell lysate as a positive control.
Purification:	Affinity Purified

Target Details

Target:	PCDH15
---------	--------

Target Details

Alternative Name:	PCDH15 (PCDH15 Products)
Background:	<p>PCDH15 is a member of the cadherin superfamily. Family members encode integral membrane proteins that mediate calcium-dependent cell-cell adhesion. PCDH15 consists of a signal peptide, 11 extracellular calcium-binding domains, a transmembrane domain and a unique cytoplasmic domain. It plays an essential role in maintenance of normal retinal and cochlear function. Mutations in this gene have been associated with hearing loss, which is consistent with its location at the Usher syndrome type 1F (USH1F) critical region on chromosome 10.</p> <p>Alias Symbols: RP11-449J3.2, DFNB23, DKFZp667A1711, USH1F, CDHR15</p> <p>Protein Interaction Partner: Dlg4,</p> <p>Protein Size: 719</p>
Molecular Weight:	80 kDa
Gene ID:	65217
NCBI Accession:	NM_001142763
UniProt:	A2A3E5
Pathways:	Sensory Perception of Sound

Application Details

Application Notes:	Optimal working dilutions should be determined experimentally by the investigator.
Comment:	Antigen size: 719 AA
Restrictions:	For Research Use only

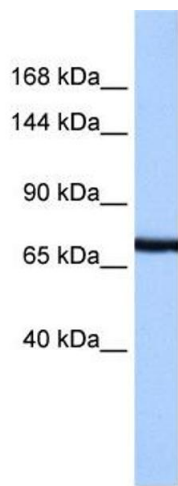
Handling

Format:	Liquid
Concentration:	Lot specific
Buffer:	Liquid. Purified antibody supplied in 1x PBS buffer with 0.09 % (w/v) sodium azide and 2 % sucrose.
Preservative:	Sodium azide
Precaution of Use:	This product contains Sodium azide: a POISONOUS AND HAZARDOUS SUBSTANCE which should be handled by trained staff only.
Handling Advice:	Avoid repeated freeze-thaw cycles.

Handling

Storage:	-20 °C
Storage Comment:	For short term use, store at 2-8°C up to 1 week. For long term storage, store at -20°C in small aliquots to prevent freeze-thaw cycles.

Validation report #100030 for Western Blotting (WB)



Western Blotting

Image 1. WB Suggested Anti-PCDH15 Antibody Titration:
0.2-1 ug/ml Positive Control: HepG2 cell lysate