

Datasheet for ABIN2784076  
**anti-PCDH21 antibody (N-Term)**[Go to Product page](#)

## 2 Images

## Overview

Quantity:	100 µL
Target:	PCDH21 (PCDH24)
Binding Specificity:	N-Term
Reactivity:	Human, Mouse, Rat, Cow, Dog, Guinea Pig, Horse, Rabbit, Zebrafish (Danio rerio)
Host:	Rabbit
Clonality:	Polyclonal
Conjugate:	This PCDH21 antibody is un-conjugated
Application:	Western Blotting (WB)

## Product Details

Immunogen:	The immunogen is a synthetic peptide directed towards the N terminal region of human PCDH21
Sequence:	GSHVYTLNGT DPEGDPISYH ISFDPSTRSV FSVDPTFGNI TLVEELDRER
Predicted Reactivity:	Cow: 93%, Dog: 93%, Guinea Pig: 86%, Horse: 93%, Human: 100%, Mouse: 100%, Rabbit: 93%, Rat: 100%, Zebrafish: 77%
Characteristics:	This is a rabbit polyclonal antibody against PCDH21. It was validated on Western Blot.
Purification:	Affinity Purified

## Target Details

Target:	PCDH21 (PCDH24)
---------	-----------------

## Target Details

Alternative Name:	PCDH21 ( <a href="#">PCDH24 Products</a> )
Background:	<p>This gene is a member of the cadherin superfamily of calcium-dependent cell-cell adhesion molecules. This non-classical cadherin appears to be exclusively expressed in the mitral and tufted cells in the main and accessory olfactory bulbs of the brain, suggesting a possible role in the formation and maintenance of neuronal networks. Alternatively spliced transcript variants encoding different isoform have been identified.</p> <p>Alias Symbols: DKFZp434A132, KIAA1775, PRCAD, CORD15, PCDH21</p> <p>Protein Interaction Partner: PROM1, RYK,</p> <p>Protein Size: 859</p>
Molecular Weight:	91 kDa
Gene ID:	92211
NCBI Accession:	<a href="#">NM_033100</a> , <a href="#">NP_149091</a>
UniProt:	<a href="#">Q96JP9</a>

## Application Details

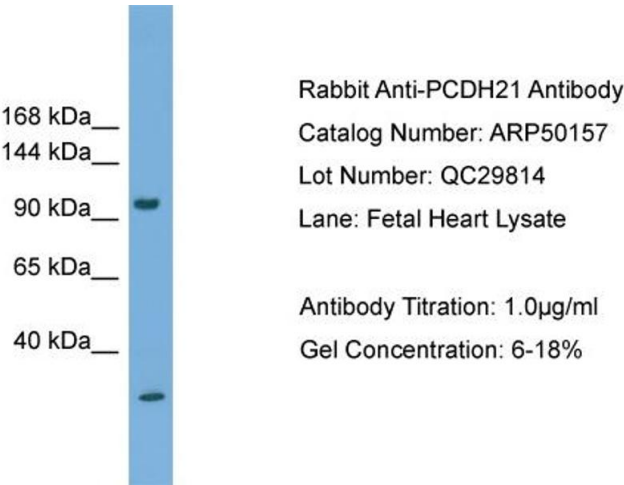
Application Notes:	Optimal working dilutions should be determined experimentally by the investigator.
Comment:	Antigen size: 859 AA
Restrictions:	For Research Use only

## Handling

Format:	Liquid
Concentration:	Lot specific
Buffer:	Liquid. Purified antibody supplied in 1x PBS buffer with 0.09 % (w/v) sodium azide and 2 % sucrose.
Preservative:	Sodium azide
Precaution of Use:	This product contains Sodium azide: a POISONOUS AND HAZARDOUS SUBSTANCE which should be handled by trained staff only.
Handling Advice:	Avoid repeated freeze-thaw cycles.
Storage:	-20 °C
Storage Comment:	For short term use, store at 2-8°C up to 1 week. For long term storage, store at -20°C in small

aliquots to prevent freeze-thaw cycles.

Validation report #100030 for Western Blotting (WB)



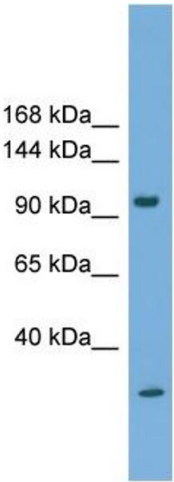
Rabbit Anti-PCDH21 Antibody  
Catalog Number: ARP50157  
Lot Number: QC29814  
Lane: Fetal Heart Lysate  
  
Antibody Titration: 1.0µg/ml  
Gel Concentration: 6-18%

Western Blotting

**Image 1.** WB Suggested Anti-PCDH21

Antibody Titration: 0.2-1 µg/mL ELISA Titer: 1:1562500

Positive Control: Human heart



Western Blotting

**Image 2.** WB Suggested Anti-PCDH21 Antibody Titration:

0.2-1 ug/ml ELISA Titer: 1:1562500 Positive Control: Human heart