

Datasheet for ABIN2784077

anti-SIGLEC10 antibody (Middle Region)**1** Image**1** Publication[Go to Product page](#)

Overview

Quantity:	100 µL
Target:	SIGLEC10
Binding Specificity:	Middle Region
Reactivity:	Human, Dog
Host:	Rabbit
Clonality:	Polyclonal
Conjugate:	This SIGLEC10 antibody is un-conjugated
Application:	Western Blotting (WB)

Product Details

Immunogen:	The immunogen is a synthetic peptide directed towards the middle region of human SIGLEC10
Sequence:	CHVDFSRKGV SAQRTVRLRV AYAPRDLVIS ISRDNTPALE PQQQGNVPYL
Predicted Reactivity:	Dog: 79%, Human: 100%
Characteristics:	This is a rabbit polyclonal antibody against SIGLEC10. It was validated on Western Blot using a cell lysate as a positive control.
Purification:	Affinity Purified

Target Details

Target:	SIGLEC10
Alternative Name:	SIGLEC10 (SIGLEC10 Products)

Target Details

Background:	<p>SIGLEC10 is a putative adhesion molecule that mediates sialic-acid dependent binding to cells. SIGLEC10 preferentially binds to alpha-2,3- or alpha-2,6-linked sialic acid. The sialic acid recognition site may be masked by cis interactions with sialic acids on the same cell surface. In the immune response, SIGLEC10 may act as an inhibitory receptor upon ligand induced tyrosine phosphorylation by recruiting cytoplasmic phosphatase(s) via their SH2 domain(s) that block signal transduction through dephosphorylation of signaling molecules. SIGLECs are members of the immunoglobulin superfamily that are expressed on the cell surface. Most SIGLECs have 1 or more cytoplasmic immune receptor tyrosine-based inhibitory motifs, or ITIMs. SIGLECs are typically expressed on cells of the innate immune system, with the exception of the B-cell expressed SIGLEC6 (MIM 604405). [supplied by OMIM].</p> <p>PRIMARYREFSEQ_SPAN PRIMARY_IDENTIFIER PRIMARY_SPAN COMP 1-653 AC008750.9 90495-91147 c 654-760 DA387605.1 391-497 761-2959 AF301007.1 262-2460 2960-3794 AY358337.1 1930-2764</p> <p>Alias Symbols: MGC126774, PRO940, SIGLEC-10, SLG2</p> <p>Protein Interaction Partner: FLNA, PTPN6,</p> <p>Protein Size: 697</p>
-------------	--

Molecular Weight:	76 kDa
-------------------	--------

Gene ID:	89790
----------	-------

NCBI Accession:	NM_033130 , NP_149121
-----------------	---

UniProt:	Q96LC7
----------	------------------------

Application Details

Application Notes:	Optimal working dilutions should be determined experimentally by the investigator.
--------------------	--

Comment:	Antigen size: 697 AA
----------	----------------------

Restrictions:	For Research Use only
---------------	-----------------------

Handling

Format:	Liquid
---------	--------

Concentration:	Lot specific
----------------	--------------

Buffer:	Liquid. Purified antibody supplied in 1x PBS buffer with 0.09 % (w/v) sodium azide and 2 % sucrose.
---------	---

Preservative:	Sodium azide
---------------	--------------

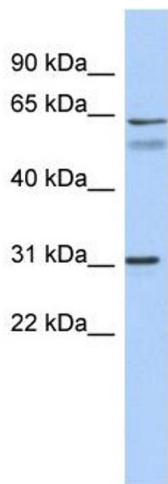
Handling

Precaution of Use:	This product contains Sodium azide: a POISONOUS AND HAZARDOUS SUBSTANCE which should be handled by trained staff only.
Handling Advice:	Avoid repeated freeze-thaw cycles.
Storage:	-20 °C
Storage Comment:	For short term use, store at 2-8°C up to 1 week. For long term storage, store at -20°C in small aliquots to prevent freeze-thaw cycles.

Publications

Product cited in:	Gerhard, Wagner, Feingold, Shenmen, Grouse, Schuler, Klein, Old, Rasooly, Good, Guyer, Peck, Derge, Lipman, Collins, Jang, Sherry, Feolo, Misquitta, Lee, Rotmistrovsky, Greenhut, Schaefer, Buetow et al.: "The status, quality, and expansion of the NIH full-length cDNA project: the Mammalian Gene Collection (MGC). ..." in: Genome research , Vol. 14, Issue 10B, pp. 2121-7, (2004) (PubMed).
-------------------	--

Validation report #100030 for Western Blotting (WB)



Western Blotting

Image 1. WB Suggested Anti-SIGLEC10 Antibody Titration: 0.2-1 ug/ml ELISA Titer: 1:1562500 Positive Control: OVCAR-3 cell lysate