



Datasheet for ABIN2784080  
**anti-LMF2 antibody (Middle Region)**



[Go to Product page](#)

1 Image

1 Publication

### Overview

Quantity:	100 µL
Target:	LMF2
Binding Specificity:	Middle Region
Reactivity:	Human, Mouse, Rat, Rabbit, Cow, Zebrafish (Danio rerio), Dog, Guinea Pig, Horse
Host:	Rabbit
Clonality:	Polyclonal
Conjugate:	This LMF2 antibody is un-conjugated
Application:	Western Blotting (WB)

### Product Details

Immunogen:	The immunogen is a synthetic peptide directed towards the middle region of human LMF2
Sequence:	YVEPGTHGRL WTGAHRLFGA VEHLQLANSY GLFRRMTGLG GRPEVVLEGS
Predicted Reactivity:	Cow: 100%, Dog: 100%, Guinea Pig: 100%, Horse: 100%, Human: 100%, Mouse: 100%, Rabbit: 100%, Rat: 100%, Zebrafish: 100%
Characteristics:	This is a rabbit polyclonal antibody against LMF2. It was validated on Western Blot using a cell lysate as a positive control.
Purification:	Affinity Purified

### Target Details

Target:	LMF2
---------	------

## Target Details

---

Alternative Name:	LMF2 ( <a href="#">LMF2 Products</a> )
Background:	<p>LMF2 belongs to the lipase maturation factor family. LMF2 is involved in the maturation of specific proteins in the endoplasmic reticulum. It may be required for maturation and transport of active lipoprotein lipase (LPL) through the secretory pathway.</p> <p>Alias Symbols: TMEM112B, TMEM153</p> <p>Protein Interaction Partner: KRTAP10-3, KRT40, CALCOCO2, UBC, KRT31, FBXO6,</p> <p>Protein Size: 682</p>
Molecular Weight:	77 kDa
Gene ID:	91289
NCBI Accession:	<a href="#">NM_033200</a> , <a href="#">NP_149977</a>
UniProt:	<a href="#">Q9BU23</a>

## Application Details

---

Application Notes:	Optimal working dilutions should be determined experimentally by the investigator.
Comment:	Antigen size: 682 AA
Restrictions:	For Research Use only

## Handling

---

Format:	Liquid
Concentration:	Lot specific
Buffer:	Liquid. Purified antibody supplied in 1x PBS buffer with 0.09 % (w/v) sodium azide and 2 % sucrose.
Preservative:	Sodium azide
Precaution of Use:	This product contains Sodium azide: a POISONOUS AND HAZARDOUS SUBSTANCE which should be handled by trained staff only.
Handling Advice:	Avoid repeated freeze-thaw cycles.
Storage:	-20 °C
Storage Comment:	For short term use, store at 2-8°C up to 1 week. For long term storage, store at -20°C in small aliquots to prevent freeze-thaw cycles.

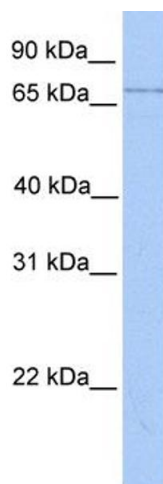
## Publications

---

Product cited in: Gerhard, Wagner, Feingold, Shenmen, Grouse, Schuler, Klein, Old, Rasooly, Good, Guyer, Peck, Derge, Lipman, Collins, Jang, Sherry, Feolo, Misquitta, Lee, Rotmistrovsky, Greenhut, Schaefer, Buetow et al.: "The status, quality, and expansion of the NIH full-length cDNA project: the Mammalian Gene Collection (MGC). ..." in: **Genome research**, Vol. 14, Issue 10B, pp. 2121-7, (2004) ([PubMed](#)).

## Images

---



### Western Blotting

**Image 1.** WB Suggested Anti-LMF2 Antibody Titration: 0.2-1 ug/ml Positive Control: HeLa cell lysate