

Datasheet for ABIN2784083
anti-SIGLEC12 antibody (N-Term)



[Go to Product page](#)

1 Image

Overview

Quantity:	100 µL
Target:	SIGLEC12
Binding Specificity:	N-Term
Reactivity:	Human, Cow, Rat, Horse, Pig, Zebrafish (Danio rerio)
Host:	Rabbit
Clonality:	Polyclonal
Conjugate:	This SIGLEC12 antibody is un-conjugated
Application:	Western Blotting (WB)

Product Details

Immunogen:	The immunogen is a synthetic peptide directed towards the N terminal region of human SIGLEC12
Sequence:	GRFLLLGDPQ TNNCSLSIRD ARKGDSGKYY FQVERGSRKW NYIYDKLSVH
Predicted Reactivity:	Cow: 77%, Horse: 83%, Human: 100%, Pig: 86%, Rat: 77%, Zebrafish: 82%
Characteristics:	This is a rabbit polyclonal antibody against SIGLEC12. It was validated on Western Blot using a cell lysate as a positive control.
Purification:	Affinity Purified

Target Details

Target:	SIGLEC12
---------	----------

Target Details

Alternative Name:	SIGLEC12 (SIGLEC12 Products)
Background:	<p>Sialic acid-binding immunoglobulin-like lectins (SIGLECs) are a family of cell surface proteins belonging to the immunoglobulin superfamily. They mediate protein-carbohydrate interactions by selectively binding to different sialic acid moieties present on glycolipids and glycoproteins. SIGLEC12 is a member of the SIGLEC3-like subfamily of SIGLECs. SIGLEC12, upon tyrosine phosphorylation, has been shown to recruit the Src homology 2 domain-containing protein-tyrosine phosphatases SHP1 and SHP2. It has been suggested that the protein is involved in the negative regulation of macrophage signaling by functioning as an inhibitory receptor. Western blots using four different antibodies against four unique regions of this protein target confirm the same apparent molecular weight in our tests.</p> <p>Sialic acid-binding immunoglobulin-like lectins (SIGLECs) are a family of cell surface proteins belonging to the immunoglobulin superfamily. They mediate protein-carbohydrate interactions by selectively binding to different sialic acid moieties present on glycolipids and glycoproteins. This gene encodes a member of the SIGLEC3-like subfamily of SIGLECs. Members of this subfamily are characterized by an extracellular V-set immunoglobulin-like domain followed by two C2-set immunoglobulin-like domains, and the cytoplasmic tyrosine-based motifs ITIM and SLAM-like. The encoded protein, upon tyrosine phosphorylation, has been shown to recruit the Src homology 2 domain-containing protein-tyrosine phosphatases SHP1 and SHP2. It has been suggested that the protein is involved in the negative regulation of macrophage signaling by functioning as an inhibitory receptor. This gene is located in a cluster with other SIGLEC3-like genes on 19q13.4. Alternatively spliced transcript variants encoding distinct isoforms have been described for this gene.</p> <p>Alias Symbols: FLJ38600, S2V, SIGLECL1, SLG, Siglec-12, Siglec-L1, Siglec-XII</p> <p>Protein Interaction Partner: CMAS, PTPN6, PTPN11,</p> <p>Protein Size: 595</p>
Molecular Weight:	63 kDa
Gene ID:	89858
NCBI Accession:	NM_053003 , NP_443729
UniProt:	Q96PQ1

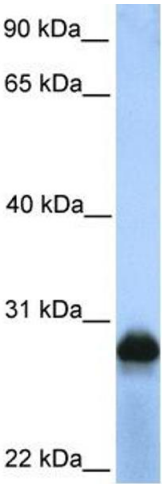
Application Details

Application Notes:	Optimal working dilutions should be determined experimentally by the investigator.
Comment:	Antigen size: 595 AA

Application Details

Restrictions:	For Research Use only
Handling	
Format:	Liquid
Concentration:	Lot specific
Buffer:	Liquid. Purified antibody supplied in 1x PBS buffer with 0.09 % (w/v) sodium azide and 2 % sucrose.
Preservative:	Sodium azide
Precaution of Use:	This product contains Sodium azide: a POISONOUS AND HAZARDOUS SUBSTANCE which should be handled by trained staff only.
Handling Advice:	Avoid repeated freeze-thaw cycles.
Storage:	-20 °C
Storage Comment:	For short term use, store at 2-8°C up to 1 week. For long term storage, store at -20°C in small aliquots to prevent freeze-thaw cycles.

Images



Western Blotting

Image 1. WB Suggested Anti-SIGLEC12 Antibody Titration:
0.2-1 ug/ml Positive Control: HepG2 cell lysate