

Datasheet for ABIN2784086
anti-MMEL1 antibody (Middle Region)[Go to Product page](#)

1 Image

Overview

Quantity:	100 µL
Target:	MMEL1
Binding Specificity:	Middle Region
Reactivity:	Human, Mouse, Rat, Guinea Pig, Cow, Dog, Horse
Host:	Rabbit
Clonality:	Polyclonal
Conjugate:	This MMEL1 antibody is un-conjugated
Application:	Western Blotting (WB)

Product Details

Immunogen:	The immunogen is a synthetic peptide directed towards the middle region of human MMEL1
Sequence:	EVVVYGIPYL QNLENIIDTY SARTIQNYLV WRLVLDRIGS LSQRFKDTRV
Predicted Reactivity:	Cow: 93%, Dog: 93%, Guinea Pig: 100%, Horse: 93%, Human: 100%, Mouse: 100%, Rat: 100%
Characteristics:	This is a rabbit polyclonal antibody against MMEL1. It was validated on Western Blot using a cell lysate as a positive control.
Purification:	Affinity Purified

Target Details

Target:	MMEL1
Alternative Name:	MMEL1 (MMEL1 Products)

Target Details

Background:	<p>MMEL1 is a member of the neutral endopeptidase (NEP) or membrane metallo-endopeptidase (MME) family. Family members play important roles in pain perception, arterial pressure regulation, phosphate metabolism and homeostasis. MMEL1 is a type II transmembrane protein and is thought to be expressed as a secreted protein. The protein encoded by this gene is a member of the neutral endopeptidase (NEP) or membrane metallo-endopeptidase (MME) family. Family members play important roles in pain perception, arterial pressure regulation, phosphate metabolism and homeostasis. This protein is a type II transmembrane protein and is thought to be expressed as a secreted protein. This gene is expressed mainly in testis with weak expression in the brain, kidney, and heart.</p> <p>Alias Symbols: MGC119454, MGC119455, MGC119456, MMEL2, NEPII, NL1, NL2, SEP, NEP2</p> <p>Protein Size: 770</p>
-------------	--

Molecular Weight:	88 kDa
-------------------	--------

Gene ID:	79258
----------	-------

NCBI Accession:	NM_033467 , NP_258428
-----------------	---

UniProt:	Q495T6
----------	------------------------

Application Details

Application Notes:	Optimal working dilutions should be determined experimentally by the investigator.
--------------------	--

Comment:	Antigen size: 770 AA
----------	----------------------

Restrictions:	For Research Use only
---------------	-----------------------

Handling

Format:	Liquid
---------	--------

Concentration:	Lot specific
----------------	--------------

Buffer:	Liquid. Purified antibody supplied in 1x PBS buffer with 0.09 % (w/v) sodium azide and 2 % sucrose.
---------	---

Preservative:	Sodium azide
---------------	--------------

Precaution of Use:	This product contains Sodium azide: a POISONOUS AND HAZARDOUS SUBSTANCE which should be handled by trained staff only.
--------------------	--

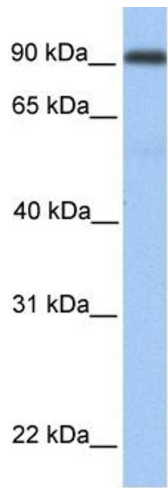
Handling Advice:	Avoid repeated freeze-thaw cycles.
------------------	------------------------------------

Storage:	-20 °C
----------	--------

Handling

Storage Comment: For short term use, store at 2-8°C up to 1 week. For long term storage, store at -20°C in small aliquots to prevent freeze-thaw cycles.

Images



Western Blotting

Image 1. WB Suggested Anti-MMEL1 Antibody Titration:
0.2-1 ug/ml Positive Control: Human Liver