



[Go to Product page](#)

Datasheet for ABIN2784087
anti-EPT1 antibody (N-Term)

1 Image

Overview

Quantity:	100 µL
Target:	EPT1
Binding Specificity:	N-Term
Reactivity:	Human, Mouse, Rat, Cow, Dog, Horse, Pig, Rabbit
Host:	Rabbit
Clonality:	Polyclonal
Conjugate:	This EPT1 antibody is un-conjugated
Application:	Western Blotting (WB)

Product Details

Immunogen:	The immunogen is a synthetic peptide directed towards the N-terminal region of Rat Seli
Sequence:	FMLLVFNLL LTYFDPDFYA SAPGHKHVPD WWIVVGILN FVAYTLDGVD
Predicted Reactivity:	Cow: 100%, Dog: 93%, Horse: 100%, Human: 100%, Mouse: 100%, Pig: 100%, Rabbit: 100%, Rat: 100%
Characteristics:	This is a rabbit polyclonal antibody against Seli. It was validated on Western Blot.
Purification:	Affinity Purified

Target Details

Target:	EPT1
Alternative Name:	Seli (EPT1 Products)

Target Details

Background: This gene encodes a selenoprotein, which contains a selenocysteine (Sec) residue at its active site. The selenocysteine is encoded by the UGA codon that normally signals translation termination. The 3' UTR of selenoprotein genes have a common stem-loop structure, the sec insertion sequence (SECIS), that is necessary for the recognition of UGA as a Sec codon rather than as a stop signal.

Alias Symbols: RGD1560938
Protein Size: 398

Molecular Weight: 43 kDa

Gene ID: 362713

NCBI Accession: [NM_001134754](#), [NP_001128226](#)

Application Details

Application Notes: Optimal working dilutions should be determined experimentally by the investigator.

Comment: Antigen size: 398 AA

Restrictions: For Research Use only

Handling

Format: Liquid

Concentration: Lot specific

Buffer: Liquid. Purified antibody supplied in 1x PBS buffer with 0.09 % (w/v) sodium azide and 2 % sucrose.

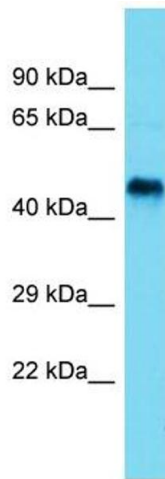
Preservative: Sodium azide

Precaution of Use: This product contains Sodium azide: a POISONOUS AND HAZARDOUS SUBSTANCE which should be handled by trained staff only.

Handling Advice: Avoid repeated freeze-thaw cycles.

Storage: -20 °C

Storage Comment: For short term use, store at 2-8°C up to 1 week. For long term storage, store at -20°C in small aliquots to prevent freeze-thaw cycles.



Western Blotting

Image 1. Host: Rabbit Target Name: Seli Sample Type: Rat
Small Intestine lysates Antibody Dilution: 1.0ug/ml