



Datasheet for ABIN2784095
anti-LRRC37B antibody (N-Term)



[Go to Product page](#)

1 Image

Overview

Quantity:	100 µL
Target:	LRRC37B
Binding Specificity:	N-Term
Reactivity:	Human
Host:	Rabbit
Clonality:	Polyclonal
Conjugate:	This LRRC37B antibody is un-conjugated
Application:	Western Blotting (WB)

Product Details

Immunogen:	The immunogen is a synthetic peptide directed towards the N terminal region of human LRRC37B
Sequence:	VSRPTKFWVS PKNLKKDLAE RWSLPEIVGI PHQLSKPQRQ KQTLRDDYLS
Predicted Reactivity:	Human: 100%
Characteristics:	This is a rabbit polyclonal antibody against LRRC37B. It was validated on Western Blot using a cell lysate as a positive control.
Purification:	Affinity Purified

Target Details

Target:	LRRC37B
---------	---------

Target Details

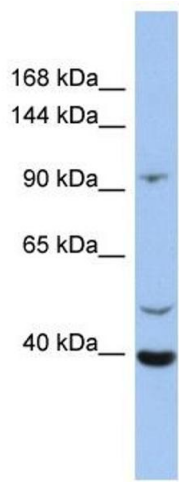
Alternative Name:	LRRC37B (LRRC37B Products)
Background:	The specific function of this protein remains unknown. Alias Symbols: - Protein Interaction Partner: ELAVL1, UBC, Protein Size: 947
Molecular Weight:	105 kDa
Gene ID:	114659
NCBI Accession:	NM_052888 , NP_443120
UniProt:	Q96QE4

Application Details

Application Notes:	Optimal working dilutions should be determined experimentally by the investigator.
Comment:	Antigen size: 947 AA
Restrictions:	For Research Use only

Handling

Format:	Liquid
Concentration:	Lot specific
Buffer:	Liquid. Purified antibody supplied in 1x PBS buffer with 0.09 % (w/v) sodium azide and 2 % sucrose.
Preservative:	Sodium azide
Precaution of Use:	This product contains Sodium azide: a POISONOUS AND HAZARDOUS SUBSTANCE which should be handled by trained staff only.
Handling Advice:	Avoid repeated freeze-thaw cycles.
Storage:	-20 °C
Storage Comment:	For short term use, store at 2-8°C up to 1 week. For long term storage, store at -20°C in small aliquots to prevent freeze-thaw cycles.



Western Blotting

Image 1. WB Suggested Anti-LRRC37B Antibody Titration:
0.2-1 ug/ml ELISA Titer: 1:1562500 Positive Control:
OVCAR-3 cell lysate