



[Go to Product page](#)

Datasheet for ABIN2784096
anti-ELFN2 antibody (N-Term)

1 Image

Overview

Quantity:	100 µL
Target:	ELFN2
Binding Specificity:	N-Term
Reactivity:	Human, Rat, Mouse, Cow, Rabbit, Guinea Pig, Horse
Host:	Rabbit
Clonality:	Polyclonal
Conjugate:	This ELFN2 antibody is un-conjugated
Application:	Western Blotting (WB)

Product Details

Immunogen:	The immunogen is a synthetic peptide directed towards the N terminal region of human ELFN2
Sequence:	PVSHPTPYST DAQREPDENS GFNPDEILSV EPPASSTTDA SAGPAIKLHH
Predicted Reactivity:	Cow: 93%, Guinea Pig: 100%, Horse: 100%, Human: 100%, Mouse: 100%, Rabbit: 100%, Rat: 100%
Characteristics:	This is a rabbit polyclonal antibody against ELFN2. It was validated on Western Blot using a cell lysate as a positive control.
Purification:	Affinity Purified

Target Details

Target:	ELFN2
---------	-------

Target Details

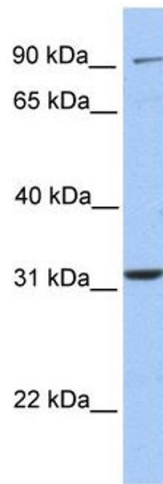
Alternative Name:	ELFN2 (ELFN2 Products)
Background:	<p>ELFN2 is a single-pass membrane protein. It contains 1 fibronectin type-III domain and 5 LRR (leucine-rich) repeats. The exact function of ELFN2 remains unknown.</p> <p>Alias Symbols: KIAA1904, LRRC62, dJ63G5.3, PPP1R29</p> <p>Protein Interaction Partner: PPP1CA, UBC,</p> <p>Protein Size: 820</p>
Molecular Weight:	90 kDa
Gene ID:	114794
NCBI Accession:	NM_052906 , NP_443138
UniProt:	Q5R3F8

Application Details

Application Notes:	Optimal working dilutions should be determined experimentally by the investigator.
Comment:	Antigen size: 820 AA
Restrictions:	For Research Use only

Handling

Format:	Liquid
Concentration:	Lot specific
Buffer:	Liquid. Purified antibody supplied in 1x PBS buffer with 0.09 % (w/v) sodium azide and 2 % sucrose.
Preservative:	Sodium azide
Precaution of Use:	This product contains Sodium azide: a POISONOUS AND HAZARDOUS SUBSTANCE which should be handled by trained staff only.
Handling Advice:	Avoid repeated freeze-thaw cycles.
Storage:	-20 °C
Storage Comment:	For short term use, store at 2-8°C up to 1 week. For long term storage, store at -20°C in small aliquots to prevent freeze-thaw cycles.



Western Blotting

Image 1. WB Suggested Anti-ELFN2 Antibody Titration:
0.2-1 ug/ml Positive Control: 721_B cell lysate