



[Go to Product page](#)

Datasheet for ABIN2784097

anti-TMEM132B antibody (Middle Region)

1 Image

Overview

Quantity:	100 µL
Target:	TMEM132B
Binding Specificity:	Middle Region
Reactivity:	Mouse, Human, Cow, Dog, Guinea Pig, Horse
Host:	Rabbit
Clonality:	Polyclonal
Conjugate:	This TMEM132B antibody is un-conjugated
Application:	Western Blotting (WB)

Product Details

Immunogen:	The immunogen is a synthetic peptide directed towards the middle region of human TMEM132B
Sequence:	VQEFWHRGTP VGQEESTNKS TTPQSPMEGK NKLLKSGGPD AFTSFPTQGK
Predicted Reactivity:	Cow: 86%, Dog: 86%, Guinea Pig: 77%, Horse: 93%, Human: 100%, Mouse: 79%
Characteristics:	This is a rabbit polyclonal antibody against TMEM132B. It was validated on Western Blot using a cell lysate as a positive control.
Purification:	Affinity Purified

Target Details

Target:	TMEM132B
---------	----------

Target Details

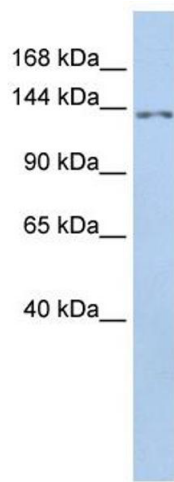
Alternative Name:	TMEM132B (TMEM132B Products)
Background:	TMEM132B single-pass type I membrane protein. It belongs to the TMEM132 family. The exact function of TMEM132B is not known. Alias Symbols: KIAA1786, KIAA1906 Protein Size: 1078
Molecular Weight:	119 kDa
Gene ID:	114795
NCBI Accession:	NM_052907 , NP_443139
UniProt:	Q14DG7

Application Details

Application Notes:	Optimal working dilutions should be determined experimentally by the investigator.
Comment:	Antigen size: 1078 AA
Restrictions:	For Research Use only

Handling

Format:	Liquid
Concentration:	Lot specific
Buffer:	Liquid. Purified antibody supplied in 1x PBS buffer with 0.09 % (w/v) sodium azide and 2 % sucrose.
Preservative:	Sodium azide
Precaution of Use:	This product contains Sodium azide: a POISONOUS AND HAZARDOUS SUBSTANCE which should be handled by trained staff only.
Handling Advice:	Avoid repeated freeze-thaw cycles.
Storage:	-20 °C
Storage Comment:	For short term use, store at 2-8°C up to 1 week. For long term storage, store at -20°C in small aliquots to prevent freeze-thaw cycles.



Western Blotting

Image 1. WB Suggested Anti-TMEM132B Antibody

Titration: 0.2-1 ug/ml ELISA Titer: 1:62500 Positive Control:

Hela cell lysate