

Datasheet for ABIN2784112
anti-ANTXR2 antibody (N-Term)[Go to Product page](#)

2 Images

Overview

Quantity:	100 µL
Target:	ANTXR2
Binding Specificity:	N-Term
Reactivity:	Human, Mouse, Rat, Dog, Cow, Rabbit, Guinea Pig, Horse
Host:	Rabbit
Clonality:	Polyclonal
Conjugate:	This ANTXR2 antibody is un-conjugated
Application:	Western Blotting (WB)

Product Details

Immunogen:	The immunogen is a synthetic peptide corresponding to a region of Mouse
Sequence:	GLVPSYAENE AKKSRLGAS VYCVGVLD FE QAQLERIADS KDQVFPVKGG
Predicted Reactivity:	Cow: 100%, Dog: 100%, Guinea Pig: 100%, Horse: 100%, Human: 100%, Mouse: 100%, Rabbit: 93%, Rat: 100%
Characteristics:	This is a rabbit polyclonal antibody against Antxr2. It was validated on Western Blot.
Purification:	Affinity Purified

Target Details

Target:	ANTXR2
Alternative Name:	Antxr2 (ANTXR2 Products)

Target Details

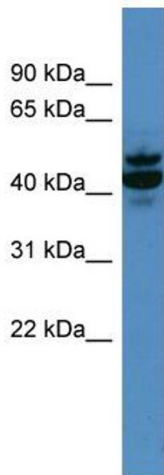
Background:	Antxr2 is necessary for cellular interactions with laminin and the extracellular matrix. Alias Symbols: 2310046B19Rik, AW561899, CMG-2, CMG2, cl-35 Protein Size: 487
Molecular Weight:	53 kDa
Gene ID:	71914
NCBI Accession:	NM_133738 , NP_598499
UniProt:	Q6DFX2

Application Details

Application Notes:	Optimal working dilutions should be determined experimentally by the investigator.
Comment:	Antigen size: 487 AA
Restrictions:	For Research Use only

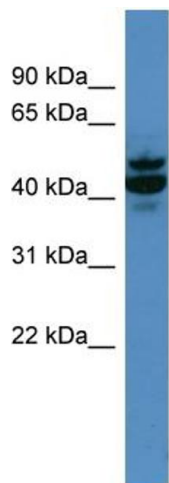
Handling

Format:	Liquid
Concentration:	Lot specific
Buffer:	Liquid. Purified antibody supplied in 1x PBS buffer with 0.09 % (w/v) sodium azide and 2 % sucrose.
Preservative:	Sodium azide
Precaution of Use:	This product contains Sodium azide: a POISONOUS AND HAZARDOUS SUBSTANCE which should be handled by trained staff only.
Handling Advice:	Avoid repeated freeze-thaw cycles.
Storage:	-20 °C
Storage Comment:	For short term use, store at 2-8°C up to 1 week. For long term storage, store at -20°C in small aliquots to prevent freeze-thaw cycles.



Western Blotting

Image 1. WB Suggested Anti-Antxr2 Antibody Titration: 0.2-1 ug/ml ELISA Titer: 1:312500 Positive Control: Mouse Liver



Rabbit Anti-Antxr2 Antibody
Catalog Number: ARP50242
Lot Number: QC19965
Lane: Mouse Liver Lysate

Antibody Titration: 1.0µg/ml
Gel Concentration: 12%

Western Blotting

Image 2. WB Suggested Anti-Antxr2 Antibody Titration: 0.2-1 µg/mL ELISA Titer: 1:12500 Positive Control: Mouse Liver