

Datasheet for ABIN2784129

anti-COLEC12 antibody (N-Term)[Go to Product page](#)**1** Image

Overview

Quantity:	100 µL
Target:	COLEC12
Binding Specificity:	N-Term
Reactivity:	Human, Mouse, Rat, Rabbit, Guinea Pig, Dog, Horse, Cow, Pig
Host:	Rabbit
Clonality:	Polyclonal
Conjugate:	This COLEC12 antibody is un-conjugated
Application:	Western Blotting (WB)

Product Details

Immunogen:	The immunogen is a synthetic peptide directed towards the N terminal region of human COLEC12
Sequence:	AISTNSELST FRSDILDLRQ QLREITEKTS KNKDTLEKLQ ASGDALVDRQ
Predicted Reactivity:	Cow: 100%, Dog: 100%, Guinea Pig: 93%, Horse: 93%, Human: 100%, Mouse: 100%, Pig: 100%, Rabbit: 100%, Rat: 93%
Characteristics:	This is a rabbit polyclonal antibody against COLEC12. It was validated on Western Blot using a cell lysate as a positive control.
Purification:	Affinity Purified

Target Details

Target:	COLEC12
---------	---------

Target Details

Alternative Name:	COLEC12 (COLEC12 Products)
Background:	<p>COLEC12 is a member of the C-lectin family, proteins that possess collagen-like sequences and carbohydrate recognition domains. This protein is a scavenger receptor, a cell surface glycoprotein that can bind to carbohydrate antigens on microorganisms facilitating their recognition and removal. In addition, these receptors can recognize oxidized phospholipids so they may also participate in removing oxidatively damaged or apoptotic cells. This gene encodes a member of the C-lectin family, proteins that possess collagen-like sequences and carbohydrate recognition domains. This protein is a scavenger receptor, a cell surface glycoprotein that can bind to carbohydrate antigens on microorganisms facilitating their recognition and removal. In addition, these receptors can recognize oxidized phospholipids so they may also participate in removing oxidatively damaged or apoptotic cells.</p> <p>Alias Symbols: CLP1, NSR2, SCARA4, SRCL</p> <p>Protein Interaction Partner: APP, EXOC1,</p> <p>Protein Size: 742</p>
Molecular Weight:	81 kDa
Gene ID:	81035
NCBI Accession:	NM_130386 , NP_569057
UniProt:	Q5KU26
Pathways:	Activation of Innate immune Response

Application Details

Application Notes:	Optimal working dilutions should be determined experimentally by the investigator.
Comment:	Antigen size: 742 AA
Restrictions:	For Research Use only

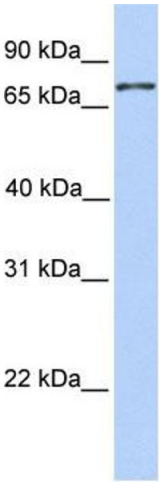
Handling

Format:	Liquid
Concentration:	Lot specific
Buffer:	Liquid. Purified antibody supplied in 1x PBS buffer with 0.09 % (w/v) sodium azide and 2 % sucrose.
Preservative:	Sodium azide

Handling

Precaution of Use:	This product contains Sodium azide: a POISONOUS AND HAZARDOUS SUBSTANCE which should be handled by trained staff only.
Handling Advice:	Avoid repeated freeze-thaw cycles.
Storage:	-20 °C
Storage Comment:	For short term use, store at 2-8°C up to 1 week. For long term storage, store at -20°C in small aliquots to prevent freeze-thaw cycles.

Images



Western Blotting

Image 1. WB Suggested Anti-COLEC12 Antibody Titration:
0.2-1 ug/ml Positive Control: 721_B cell lysate