

Datasheet for ABIN2784132

**anti-GTPase, IMAP Family Member 1 (GIMAP1) (N-Term)
antibody**[Go to Product page](#)**1** Image

Overview

Quantity:	100 µL
Target:	GTPase, IMAP Family Member 1 (GIMAP1)
Binding Specificity:	N-Term
Reactivity:	Human
Host:	Rabbit
Clonality:	Polyclonal
Conjugate:	Un-conjugated
Application:	Western Blotting (WB)

Product Details

Immunogen:	The immunogen is a synthetic peptide directed towards the N terminal region of human GIMAP1
Sequence:	MGGRKMATDE ENVYGLEENA QSRQESTRRL ILVGRTGAGK SATGNSILGQ
Predicted Reactivity:	Human: 100%
Characteristics:	This is a rabbit polyclonal antibody against GIMAP1. It was validated on Western Blot using a cell lysate as a positive control.
Purification:	Affinity Purified

Target Details

Target:	GTPase, IMAP Family Member 1 (GIMAP1)
---------	---------------------------------------

Target Details

Alternative Name:	GIMAP1 (GIMAP1 Products)
Background:	<p>GIMAP1 belonging to the GTP-binding superfamily and to the immuno-associated nucleotide (IAN) subfamily of nucleotide-binding proteins. This gene encodes a protein belonging to the GTP-binding superfamily and to the immuno-associated nucleotide (IAN) subfamily of nucleotide-binding proteins. In humans, the IAN subfamily genes are located in a cluster at 7q36.1.</p> <p>Alias Symbols: HIMAP1, IMAP1, IMAP38</p> <p>Protein Interaction Partner: UBC, tat,</p> <p>Protein Size: 306</p>
Molecular Weight:	34 kDa
Gene ID:	170575
NCBI Accession:	NM_130759 , NP_570115
UniProt:	Q8WWP7

Application Details

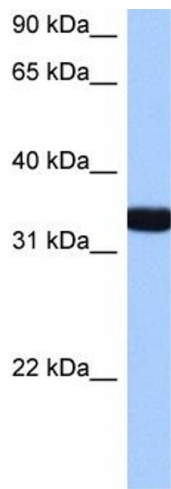
Application Notes:	Optimal working dilutions should be determined experimentally by the investigator.
Comment:	Antigen size: 306 AA
Restrictions:	For Research Use only

Handling

Format:	Liquid
Concentration:	Lot specific
Buffer:	Liquid. Purified antibody supplied in 1x PBS buffer with 0.09 % (w/v) sodium azide and 2 % sucrose.
Preservative:	Sodium azide
Precaution of Use:	This product contains Sodium azide: a POISONOUS AND HAZARDOUS SUBSTANCE which should be handled by trained staff only.
Handling Advice:	Avoid repeated freeze-thaw cycles.
Storage:	-20 °C
Storage Comment:	For short term use, store at 2-8°C up to 1 week. For long term storage, store at -20°C in small

aliquots to prevent freeze-thaw cycles.

Validation report #100030 for Western Blotting (WB)



Western Blotting

Image 1. WB Suggested Anti-GIMAP1 Antibody Titration:
0.2-1 ug/ml Positive Control: Hela cell lysate