



[Go to Product page](#)

Datasheet for ABIN2784136
anti-EMID1 antibody (C-Term)

1 Image

1 Publication

Overview

Quantity:	100 µL
Target:	EMID1
Binding Specificity:	C-Term
Reactivity:	Human, Rat, Mouse, Cow, Dog, Horse, Guinea Pig
Host:	Rabbit
Clonality:	Polyclonal
Application:	Western Blotting (WB)

Product Details

Immunogen:	The immunogen is a synthetic peptide directed towards the C terminal region of human EMID1
Sequence:	TMIGLYEPEL GSGAGPAGTG TPSELLRGKRG GHATNYRIVA PRSRDERG
Predicted Reactivity:	Cow: 100%, Dog: 100%, Guinea Pig: 92%, Horse: 100%, Human: 100%, Mouse: 100%, Rat: 100%
Characteristics:	This is a rabbit polyclonal antibody against EMID1. It was validated on Western Blot using a cell lysate as a positive control.
Purification:	Affinity Purified

Target Details

Target:	EMID1
Alternative Name:	EMID1 (EMID1 Products)
Background:	EMID1 contains 1 collagen-like domain and 1 EMI domain. The exact function of EMID1

Target Details

remains unknown.

Alias Symbols: EMI5, EMU1, MGC50657, hEmu1

Protein Interaction Partner: CDC5L, COL26A1, EMID1,

Protein Size: 443

Molecular Weight: 45 kDa

Gene ID: 129080

NCBI Accession: [NM_133455](#), [NP_597712](#)

UniProt: [Q96A84](#)

Application Details

Application Notes: Optimal working dilutions should be determined experimentally by the investigator.

Comment: Antigen size: 443 AA

Restrictions: For Research Use only

Handling

Format: Liquid

Concentration: Lot specific

Buffer: Liquid. Purified antibody supplied in 1x PBS buffer with 0.09 % (w/v) sodium azide and 2 % sucrose.

Preservative: Sodium azide

Precaution of Use: This product contains Sodium azide: a POISONOUS AND HAZARDOUS SUBSTANCE which should be handled by trained staff only.

Handling Advice: Avoid repeated freeze-thaw cycles.

Storage: -20 °C

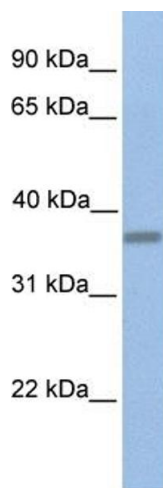
Storage Comment: For short term use, store at 2-8°C up to 1 week. For long term storage, store at -20°C in small aliquots to prevent freeze-thaw cycles.

Publications

Product cited in: Aubol, Wu, Keshwani, Movassat, Fattet, Hertel, Fu, Adams: "Release of SR Proteins from CLK1 by SRPK1: A Symbiotic Kinase System for Phosphorylation Control of Pre-mRNA Splicing." in:

Molecular cell, Vol. 63, Issue 2, pp. 218-228, (2016) ([PubMed](#)).

Eisenreich, Zakrzewicz, Huber, Thierbach, Pepke, Goldin-Lang, Schultheiss, Pries, Rauch: "Regulation of pro-angiogenic tissue factor expression in hypoxia-induced human lung cancer cells." in: **Oncology reports**, Vol. 30, Issue 1, pp. 462-70, (2013) ([PubMed](#)).



Western Blotting

Image 1. WB Suggested Anti-EMID1 Antibody Titration: 0.2-1 ug/ml Positive Control: 721_B cell lysate EMID1 is supported by BioGPS gene expression data to be expressed in 721_B