



[Go to Product page](#)

Datasheet for ABIN2784140
anti-SPOPL antibody (N-Term)

1 Image

Overview

Quantity:	100 µL
Target:	SPOPL
Binding Specificity:	N-Term
Reactivity:	Human, Mouse, Cow, Zebrafish (Danio rerio), Dog, Rat, Rabbit, Guinea Pig, Horse
Host:	Rabbit
Clonality:	Polyclonal
Conjugate:	This SPOPL antibody is un-conjugated
Application:	Western Blotting (WB)

Product Details

Immunogen:	The immunogen is a synthetic peptide directed towards the N terminal region of human SPOPL
Sequence:	KGLDDESKDY LSLYLLLVSC PKSEVRAKFK FLLNAKREE TKAMESQRAY
Predicted Reactivity:	Cow: 100%, Dog: 100%, Guinea Pig: 100%, Horse: 100%, Human: 100%, Mouse: 100%, Rabbit: 100%, Rat: 100%, Zebrafish: 100%
Characteristics:	This is a rabbit polyclonal antibody against SPOPL. It was validated on Western Blot using a cell lysate as a positive control.
Purification:	Affinity Purified

Target Details

Target:	SPOPL
---------	-------

Target Details

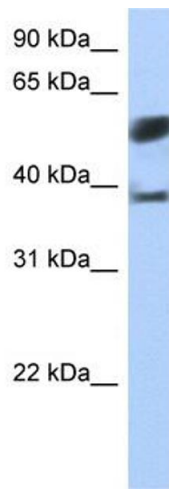
Alternative Name:	SPOPL (SPOPL Products)
Background:	<p>SPOPL belongs to the Tdpoz family. It contains 1 BTB (POZ) domain and 1 MATH domain. In complex with a cullin, SPOPL may act in ubiquitination and proteasomal degradation processes.</p> <p>Alias Symbols: -</p> <p>Protein Interaction Partner: KPNA5,</p> <p>Protein Size: 392</p>
Molecular Weight:	45 kDa
Gene ID:	339745
NCBI Accession:	NM_001001664 , NP_001001664
UniProt:	Q6IQ16

Application Details

Application Notes:	Optimal working dilutions should be determined experimentally by the investigator.
Comment:	Antigen size: 392 AA
Restrictions:	For Research Use only

Handling

Format:	Liquid
Concentration:	Lot specific
Buffer:	Liquid. Purified antibody supplied in 1x PBS buffer with 0.09 % (w/v) sodium azide and 2 % sucrose.
Preservative:	Sodium azide
Precaution of Use:	This product contains Sodium azide: a POISONOUS AND HAZARDOUS SUBSTANCE which should be handled by trained staff only.
Handling Advice:	Avoid repeated freeze-thaw cycles.
Storage:	-20 °C
Storage Comment:	For short term use, store at 2-8°C up to 1 week. For long term storage, store at -20°C in small aliquots to prevent freeze-thaw cycles.



Western Blotting

Image 1. WB Suggested Anti-SPOPL Antibody Titration: 0.2-1 ug/ml Positive Control: Jurkat cell lysate