

Datasheet for ABIN2784147
anti-TCEAL6 antibody (C-Term)[Go to Product page](#)

2 Images

Overview

Quantity:	100 µL
Target:	TCEAL6
Binding Specificity:	C-Term
Reactivity:	Human
Host:	Rabbit
Clonality:	Polyclonal
Conjugate:	This TCEAL6 antibody is un-conjugated
Application:	Western Blotting (WB)

Product Details

Immunogen:	The immunogen is a synthetic peptide directed towards the C terminal region of human TCEAL6
Sequence:	LSSEEMMREC GDVSRAQEEL RKKQKMGGFH WMQRDVQDPF AQGDNGVSGE
Predicted Reactivity:	Human: 100%
Characteristics:	This is a rabbit polyclonal antibody against TCEAL6. It was validated on Western Blot.
Purification:	Affinity Purified

Target Details

Target:	TCEAL6
Alternative Name:	TCEAL6 (TCEAL6 Products)

Target Details

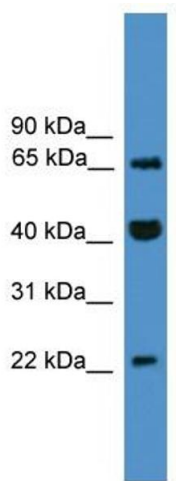
Background:	TCEAL6 may be involved in transcriptional regulation. Alias Symbols: Tceal3 Protein Interaction Partner: UBC, HHV8GK18_gp81, Protein Size: 183
Molecular Weight:	20 kDa
Gene ID:	158931
NCBI Accession:	NM_001006938 , NP_001006939

Application Details

Application Notes:	Optimal working dilutions should be determined experimentally by the investigator.
Comment:	Antigen size: 183 AA
Restrictions:	For Research Use only

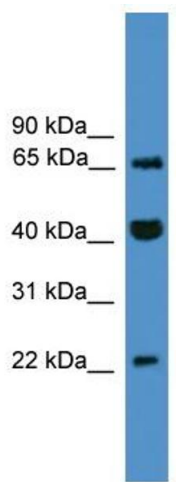
Handling

Format:	Liquid
Concentration:	Lot specific
Buffer:	Liquid. Purified antibody supplied in 1x PBS buffer with 0.09 % (w/v) sodium azide and 2 % sucrose.
Preservative:	Sodium azide
Precaution of Use:	This product contains Sodium azide: a POISONOUS AND HAZARDOUS SUBSTANCE which should be handled by trained staff only.
Handling Advice:	Avoid repeated freeze-thaw cycles.
Storage:	-20 °C
Storage Comment:	For short term use, store at 2-8°C up to 1 week. For long term storage, store at -20°C in small aliquots to prevent freeze-thaw cycles.



Western Blotting

Image 1. WB Suggested Anti-TCEAL6 Antibody Titration: 0.2-1 ug/ml ELISA Titer: 1:312500 Positive Control: Jurkat cell lysate



Rabbit Anti-TCEAL6 Antibody
Catalog Number: ARP50342
Lot Number: QC30124
Lane: Jurkat Cell Lysate

Antibody Titration: 1.0µg/ml
Gel Concentration: 12%

Western Blotting

Image 2. WB Suggested Anti-TCEAL6 Antibody Titration: 0.2-1 µg/mL ELISA Titer: 1::12500 Positive Control: Jurkat cell lysate