

Datasheet for ABIN2784153  
**anti-PHF19 antibody (C-Term)**



[Go to Product page](#)

1 Image

## Overview

|                      |  |
|----------------------|--|
| Quantity:            | 100 µL   |
| Target:              | PHF19  |
| Binding Specificity: | C-Term   |
| Reactivity:          | Human, Zebrafish (Danio rerio), Saccharomyces cerevisiae |
| Host:                | Rabbit   |
| Clonality:           | Polyclonal   |
| Conjugate:           | This PHF19 antibody is un-conjugated                     |
| Application:         | Western Blotting (WB)                                    |

## Product Details

|                       |   |
|-----------------------|---|
| Immunogen:            | The immunogen is a synthetic peptide directed towards the C terminal region of human PHF19                                      |
| Sequence:             | RRCIFALAVR VSLPSSPVPA SPASSSGADQ RLPSQSLSSK QKGHTWALET  |
| Predicted Reactivity: | Human: 100%, Yeast: 92%, Zebrafish: 79%   |
| Characteristics:      | This is a rabbit polyclonal antibody against PHF19. It was validated on Western Blot using a cell lysate as a positive control. |
| Purification:         | Affinity Purified   |

## Target Details

|                   |  |
|-------------------|--|
| Target:           | PHF19                                    |
| Alternative Name: | PHF19 ( <a href="#">PHF19 Products</a> ) |

Target Details

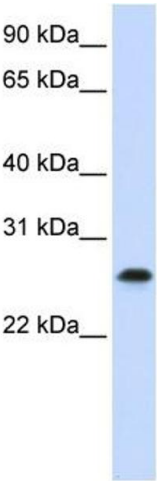
|                   |   |
|-------------------|---|
| Background:       | PHF19 contains 2 PHD-type zinc fingers. It acts as a transcritpional repressor. Isoform 1 and isoform 2 inhibit transcription from an HSV-tk promoter.<br><br>Alias Symbols: MGC131698, MGC149712, MGC149713, MGC23929, PCL3, MTF2L1<br><br>Protein Interaction Partner: SUZ12, EZH2, SUV39H2, KDM1A, SUV39H1, HIC1, PHF19, EED,<br><br>Protein Size: 207 |
| Molecular Weight: | 22 kDa  |
| Gene ID:          | 26147   |
| NCBI Accession:   | <a href="#">NM_001009936</a> , <a href="#">NP_001009936</a>   |
| Pathways:         | <a href="#">Stem Cell Maintenance</a>   |

Application Details

|                    |  |
|--------------------|--|
| Application Notes: | Optimal working dilutions should be determined experimentally by the investigator. |
| Comment:           | Antigen size: 207 AA   |
| Restrictions:      | For Research Use only  |

Handling

|                    |   |
|--------------------|---|
| Format:            | Liquid  |
| Concentration:     | Lot specific  |
| Buffer:            | Liquid. Purified antibody supplied in 1x PBS buffer with 0.09 % (w/v) sodium azide and 2 % sucrose.                                     |
| Preservative:      | Sodium azide  |
| Precaution of Use: | This product contains Sodium azide: a POISONOUS AND HAZARDOUS SUBSTANCE which should be handled by trained staff only.                  |
| Handling Advice:   | Avoid repeated freeze-thaw cycles.  |
| Storage:           | -20 °C  |
| Storage Comment:   | For short term use, store at 2-8°C up to 1 week. For long term storage, store at -20°C in small aliquots to prevent freeze-thaw cycles. |



Western Blotting

**Image 1.** WB Suggested Anti-PHF19 Antibody Titration: 0.2-1 ug/ml ELISA Titer: 1:62500 Positive Control: Jurkat cell lysate