



Datasheet for ABIN2784159
anti-ZNF658B antibody (Middle Region)



[Go to Product page](#)

1 Image

Overview

Quantity:	100 µL
Target:	ZNF658B
Binding Specificity:	Middle Region
Reactivity:	Mouse, Pig, Rabbit, Cow, Rat, Dog, Saccharomyces cerevisiae, Guinea Pig, Zebrafish (Danio rerio), Horse, Human
Host:	Rabbit
Clonality:	Polyclonal
Conjugate:	This ZNF658B antibody is un-conjugated
Application:	Western Blotting (WB)

Product Details

Immunogen:	The immunogen is a synthetic peptide directed towards the middle region of human ZNF14
Sequence:	IECGKTFSTK SHLRAHQRIH TGEKPYECVE CEKTFSHKTH LSVHQRVHTG
Predicted Reactivity:	Cow: 92%, Dog: 86%, Guinea Pig: 92%, Horse: 100%, Human: 100%, Mouse: 92%, Pig: 100%, Rabbit: 86%, Rat: 92%, Yeast: 86%, Zebrafish: 92%
Characteristics:	This is a rabbit polyclonal antibody against ZNF658B. It was validated on Western Blot.
Purification:	Affinity Purified

Target Details

Target:	ZNF658B
---------	---------

Target Details

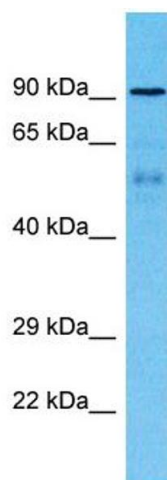
Alternative Name:	ZNF658B (ZNF658B Products)
Background:	<p>The protein encoded by this gene contains a zinc finger and a Kruppel-associated box (KRAB) domain. KRAB domain is known to be involved in the transcriptional repression of a number of zinc finger proteins.</p> <p>Alias Symbols: KOX6, GIOT-4</p> <p>Protein Size: 819</p>
Molecular Weight:	90 kDa
Gene ID:	7561
NCBI Accession:	NM_021030 , NP_066358
UniProt:	P17017

Application Details

Application Notes:	Optimal working dilution should be determined by the investigator.
Restrictions:	For Research Use only

Handling

Format:	Liquid
Concentration:	1 mg/mL
Buffer:	Liquid. Purified antibody supplied in 1x PBS buffer with 0.09 % (w/v) sodium azide and 2 % sucrose.
Preservative:	Sodium azide
Precaution of Use:	This product contains Sodium azide: a POISONOUS AND HAZARDOUS SUBSTANCE which should be handled by trained staff only.
Handling Advice:	Avoid repeat freeze-thaw cycles.
Storage:	-20 °C
Storage Comment:	For short term use, store at 2-8°C up to 1 week. For long term storage, store at -20°C in small aliquots to prevent freeze-thaw cycles.



Western Blotting

Image 1. Host: Rabbit Target Name: ZNF658B Sample Type: Breast Tumor lysates Antibody Dilution: 1.0ug/ml