

Datasheet for ABIN2784174
anti-HELT antibody (Middle Region)[Go to Product page](#)

1 Image

Overview

Quantity:	100 µL
Target:	HELT
Binding Specificity:	Middle Region
Reactivity:	Mouse, Human, Rat, Cow, Guinea Pig, Horse, Rabbit, Zebrafish (Danio rerio), Dog
Host:	Rabbit
Clonality:	Polyclonal
Conjugate:	This HELT antibody is un-conjugated
Application:	Western Blotting (WB)

Product Details

Immunogen:	The immunogen is a synthetic peptide directed towards the middle region of human HELT
Sequence:	EMTVQYLRAL HSADFPRGRE KAELLAEFAN YFHYGYHECM KNLVHYLTTV
Predicted Reactivity:	Cow: 100%, Dog: 93%, Guinea Pig: 100%, Horse: 100%, Human: 100%, Mouse: 100%, Rabbit: 100%, Rat: 100%, Zebrafish: 100%
Characteristics:	This is a rabbit polyclonal antibody against HELT. It was validated on Western Blot using a cell lysate as a positive control.
Purification:	Affinity Purified

Target Details

Target:	HELT
---------	------

Target Details

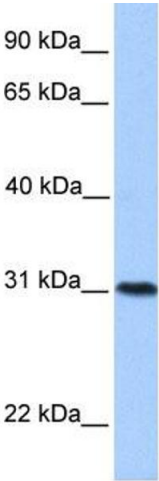
Alternative Name:	HELT (HELT Products)
Background:	<p>HELT belongs to the HEY family. It contains 1 basic helix-loop-helix (bHLH) domain and 1 orange domain. HELT is a transcriptional repressor which binds preferentially to the canonical E box sequence 5'-CACGCG-3'.</p> <p>Alias Symbols: HCM1228, HESL, Mgn, bHLHb44</p> <p>Protein Interaction Partner: TADA2A,</p> <p>Protein Size: 327</p>
Molecular Weight:	36 kDa
Gene ID:	391723
NCBI Accession:	NM_001029887 , NP_001025058
UniProt:	A6NFD8
Pathways:	Feeding Behaviour

Application Details

Application Notes:	Optimal working dilutions should be determined experimentally by the investigator.
Comment:	Antigen size: 327 AA
Restrictions:	For Research Use only

Handling

Format:	Liquid
Concentration:	Lot specific
Buffer:	Liquid. Purified antibody supplied in 1x PBS buffer with 0.09 % (w/v) sodium azide and 2 % sucrose.
Preservative:	Sodium azide
Precaution of Use:	This product contains Sodium azide: a POISONOUS AND HAZARDOUS SUBSTANCE which should be handled by trained staff only.
Handling Advice:	Avoid repeated freeze-thaw cycles.
Storage:	-20 °C
Storage Comment:	For short term use, store at 2-8°C up to 1 week. For long term storage, store at -20°C in small aliquots to prevent freeze-thaw cycles.



Western Blotting

Image 1. WB Suggested Anti-HELT Antibody Titration: 0.2-1 ug/ml Positive Control: MCF7 cell lysate