

Datasheet for ABIN2784175
anti-ZNF226 antibody (C-Term)[Go to Product page](#)

1 Image

Overview

Quantity:	100 µL
Target:	ZNF226
Binding Specificity:	C-Term
Reactivity:	Human, Rat, Mouse, Cow, Dog, Horse, Pig, Rabbit, Guinea Pig, Zebrafish (Danio rerio)
Host:	Rabbit
Clonality:	Polyclonal
Application:	Western Blotting (WB)

Product Details

Immunogen:	The immunogen is a synthetic peptide directed towards the C terminal region of human ZNF226
Sequence:	KSFGRSAHLQ AHQKVHTGDK PYKCDECGKG FKWSLNLDMMH QRVHTGEKPY
Predicted Reactivity:	Cow: 93%, Dog: 93%, Guinea Pig: 86%, Horse: 93%, Human: 100%, Mouse: 86%, Pig: 93%, Rabbit: 92%, Rat: 93%, Zebrafish: 85%
Characteristics:	This is a rabbit polyclonal antibody against ZNF226. It was validated on Western Blot using a cell lysate as a positive control.
Purification:	Affinity Purified

Target Details

Target:	ZNF226
Alternative Name:	ZNF226 (ZNF226 Products)

Target Details

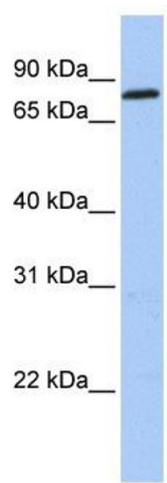
Background:	ZNF226 belongs to the krueppel C2H2-type zinc-finger protein family. It contains 19 C2H2-type zinc fingers and 1 KRAB domain. ZNF226 may be involved in transcriptional regulation. Alias Symbols: - Protein Interaction Partner: SUMO1, UBC, SSBP3, ATF4, Protein Size: 803
Molecular Weight:	92 kDa
Gene ID:	7769
NCBI Accession:	NM_001032372 , NP_001027544
UniProt:	Q9NYT6

Application Details

Application Notes:	Optimal working dilutions should be determined experimentally by the investigator.
Comment:	Antigen size: 803 AA
Restrictions:	For Research Use only

Handling

Format:	Liquid
Concentration:	Lot specific
Buffer:	Liquid. Purified antibody supplied in 1x PBS buffer with 0.09 % (w/v) sodium azide and 2 % sucrose.
Preservative:	Sodium azide
Precaution of Use:	This product contains Sodium azide: a POISONOUS AND HAZARDOUS SUBSTANCE which should be handled by trained staff only.
Handling Advice:	Avoid repeated freeze-thaw cycles.
Storage:	-20 °C
Storage Comment:	For short term use, store at 2-8°C up to 1 week. For long term storage, store at -20°C in small aliquots to prevent freeze-thaw cycles.



Western Blotting

Image 1. WB Suggested Anti-ZNF226 Antibody Titration:
0.2-1 ug/ml Positive Control: 721_B cell lysate