



[Go to Product page](#)

Datasheet for ABIN2784189
anti-ZXDC antibody (Middle Region)

1 Image

Overview

Quantity:	100 µL
Target:	ZXDC
Binding Specificity:	Middle Region
Reactivity:	Human, Mouse, Rat, Dog, Rabbit, Cow, Guinea Pig, Horse, Zebrafish (Danio rerio)
Host:	Rabbit
Clonality:	Polyclonal
Conjugate:	This ZXDC antibody is un-conjugated
Application:	Western Blotting (WB)

Product Details

Immunogen:	The immunogen is a synthetic peptide directed towards the middle region of human ZXDC
Sequence:	NLKAHMKGHE QESLFKCEVC AERFPTHAKL SSHQRSHFEP ERPYKCDFPG
Predicted Reactivity:	Cow: 100%, Dog: 100%, Guinea Pig: 100%, Horse: 100%, Human: 100%, Mouse: 100%, Rabbit: 100%, Rat: 100%, Zebrafish: 85%
Characteristics:	This is a rabbit polyclonal antibody against ZXDC. It was validated on Western Blot using a cell lysate as a positive control.
Purification:	Affinity Purified

Target Details

Target:	ZXDC
---------	------

Target Details

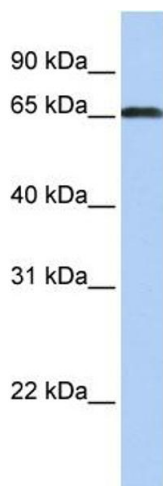
Alternative Name:	ZXDC (ZXDC Products)
Background:	<p>ZXDC belongs to the ZXD family. It contains 10 C2H2-type zinc fingers. ZXDC cooperates with CIITA to promote transcription of MHC class I and MHC class II genes.</p> <p>Alias Symbols: DKFZp547N024, FLJ13861, MGC11349, ZIDL</p> <p>Protein Interaction Partner: POGZ, WDR5, ATXN1, APP, JTB, TK1, SMN1, SH3GL2, NR1H3, NR1H2, RORA, CIITA,</p> <p>Protein Size: 710</p>
Molecular Weight:	75 kDa
Gene ID:	79364
NCBI Accession:	NM_001040653 , NP_001035743
UniProt:	Q2QGD7

Application Details

Application Notes:	Optimal working dilutions should be determined experimentally by the investigator.
Comment:	Antigen size: 710 AA
Restrictions:	For Research Use only

Handling

Format:	Liquid
Concentration:	Lot specific
Buffer:	Liquid. Purified antibody supplied in 1x PBS buffer with 0.09 % (w/v) sodium azide and 2 % sucrose.
Preservative:	Sodium azide
Precaution of Use:	This product contains Sodium azide: a POISONOUS AND HAZARDOUS SUBSTANCE which should be handled by trained staff only.
Handling Advice:	Avoid repeated freeze-thaw cycles.
Storage:	-20 °C
Storage Comment:	For short term use, store at 2-8°C up to 1 week. For long term storage, store at -20°C in small aliquots to prevent freeze-thaw cycles.



Western Blotting

Image 1. WB Suggested Anti-ZXDC Antibody Titration: 0.2-1 ug/ml Positive Control: NTERA2 cell lysate