

Datasheet for ABIN2784190
anti-ZNF391 antibody (N-Term)[Go to Product page](#)**1** Image**1** Publication

Overview

Quantity:	100 µL
Target:	ZNF391
Binding Specificity:	N-Term
Reactivity:	Human, Cow, Dog
Host:	Rabbit
Clonality:	Polyclonal
Conjugate:	This ZNF391 antibody is un-conjugated
Application:	Western Blotting (WB)

Product Details

Immunogen:	The immunogen is a synthetic peptide directed towards the N terminal region of human ZNF391
Sequence:	QQKIPKGHGS PISRKNSKDN SDLIKHQRLF SQRKPCKCNE CEKAFSYQSD
Predicted Reactivity:	Cow: 91%, Dog: 91%, Human: 100%
Characteristics:	This is a rabbit polyclonal antibody against ZNF391. It was validated on Western Blot using a cell lysate as a positive control.
Purification:	Affinity Purified

Target Details

Target:	ZNF391
---------	--------

Target Details

Alternative Name:	ZNF391 (ZNF391 Products)
Background:	<p>ZNF391 belongs to the krueppel C2H2-type zinc-finger protein family. It contains 9 C2H2-type zinc fingers. ZNF391 may be involved in transcriptional regulation.</p> <p>Alias Symbols: dJ153G14.3</p> <p>Protein Interaction Partner: CMTM5, TMEM159, AGTRAP, ARL6IP1, RTN3,</p> <p>Protein Size: 358</p>
Molecular Weight:	41 kDa
Gene ID:	346157
NCBI Accession:	NM_001076781 , NP_001070249
UniProt:	Q9UJN7

Application Details

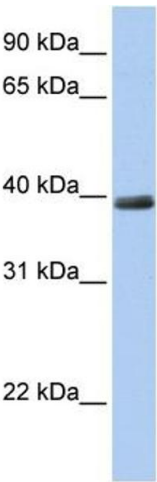
Application Notes:	Optimal working dilutions should be determined experimentally by the investigator.
Comment:	Antigen size: 358 AA
Restrictions:	For Research Use only

Handling

Format:	Liquid
Concentration:	Lot specific
Buffer:	Liquid. Purified antibody supplied in 1x PBS buffer with 0.09 % (w/v) sodium azide and 2 % sucrose.
Preservative:	Sodium azide
Precaution of Use:	This product contains Sodium azide: a POISONOUS AND HAZARDOUS SUBSTANCE which should be handled by trained staff only.
Handling Advice:	Avoid repeated freeze-thaw cycles.
Storage:	-20 °C
Storage Comment:	For short term use, store at 2-8°C up to 1 week. For long term storage, store at -20°C in small aliquots to prevent freeze-thaw cycles.

Product cited in: Collins, Wright, Edwards, Davis, Grinham, Cole, Goward, Aguado, Mallya, Mokrab, Huckle, Beare, Dunham: "A genome annotation-driven approach to cloning the human ORFeome." in: **Genome biology**, Vol. 5, Issue 10, pp. R84, (2004) ([PubMed](#)).

Validation report #100034 for Immunohistochemistry (IHC)



Western Blotting

Image 1. WB Suggested Anti-ZNF391 Antibody Titration: 0.2-1 ug/ml Positive Control: 721_B cell lysate ZNF391 is supported by BioGPS gene expression data to be expressed in 721_B