



Datasheet for ABIN2784196  
**anti-FIP200 antibody (C-Term)**



[Go to Product page](#)

2 Images

Overview

Quantity:	100 µL
Target:	FIP200 (RB1CC1)
Binding Specificity:	C-Term
Reactivity:	Human, Mouse, Rat, Cow, Dog, Guinea Pig, Horse, Zebrafish (Danio rerio)
Host:	Rabbit
Clonality:	Polyclonal
Conjugate:	This FIP200 antibody is un-conjugated
Application:	Western Blotting (WB), Immunohistochemistry (IHC)

Product Details

Immunogen:	The immunogen is a synthetic peptide directed towards the C terminal region of human RB1CC1
Sequence:	SGASRRPWVL GKVMEKEYCQ AKKAQNRFKV PLGTFYRVK AVSWNKKV
Predicted Reactivity:	Cow: 100%, Dog: 100%, Guinea Pig: 100%, Horse: 100%, Human: 100%, Mouse: 100%, Rat: 100%, Zebrafish: 100%
Characteristics:	This is a rabbit polyclonal antibody against RB1CC1. It was validated on Western Blot using a cell lysate as a positive control.
Purification:	Affinity Purified

Target Details

Target:	FIP200 (RB1CC1)
---------	-----------------

## Target Details

---

Alternative Name: [RB1CC1 \(RB1CC1 Products\)](#)

---

Background: RB1CC1 is implicated in the regulation of RB1 expression. It functions as a DNA-binding transcription factor. RB1CC1 is a potent regulator of the RB1 pathway and a mediator that plays a crucial role in muscular differentiation. The expression of RB1CC1 is, thus, a prerequisite for myogenic differentiation. RB1CC1 is frequently mutated in breast cancer and shows characteristics of a classical tumor suppressor gene.

Alias Symbols: CC1, DRAGOU14, FIP200

Protein Interaction Partner: ATG16L1, SESN2, ATG5, UBC, EXOC1, DYRK2, PINK1, CALCOCO2, RFWD2, CTNNB1, GABARAPL1, GABARAP, VHL, RNF111, SMARCB1, SKIL, SKI, TBKBP1, TP53, ATG13, ULK2, SAFB2, ULK1, SAFB, RPA2, RPA1, PRKAB2, PRKAA2, HSBP1, MAP1LC3C, SMCR8, ATG101, YLPM1, TBK1, RBMX, PTK2

Protein Size: 1591

---

Molecular Weight: 183 kDa

---

Gene ID: 9821

---

NCBI Accession: [NM\\_001083617](#), [NP\\_001077086](#)

---

UniProt: [Q8TDY2](#)

---

Pathways: [Regulation of Cell Size](#), [Autophagy](#)

---

## Application Details

---

Application Notes: Optimal working dilutions should be determined experimentally by the investigator.

---

Comment: Antigen size: 1591 AA

---

Restrictions: For Research Use only

---

## Handling

---

Format: Liquid

---

Concentration: Lot specific

---

Buffer: Liquid. Purified antibody supplied in 1x PBS buffer with 0.09 % (w/v) sodium azide and 2 % sucrose.

---

Preservative: Sodium azide

---

Precaution of Use: This product contains Sodium azide: a POISONOUS AND HAZARDOUS SUBSTANCE which should be handled by trained staff only.

---

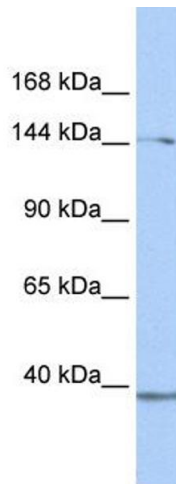
## Handling

Handling Advice: Avoid repeated freeze-thaw cycles.

Storage: -20 °C

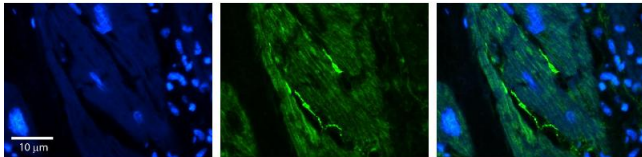
Storage Comment: For short term use, store at 2-8°C up to 1 week. For long term storage, store at -20°C in small aliquots to prevent freeze-thaw cycles.

## Validation report #100034 for Immunohistochemistry (IHC)



### Western Blotting

**Image 1.** WB Suggested Anti-RB1CC1 Antibody Titration: 0.2-1 ug/ml Positive Control: 293T cell lysate RB1CC1 is strongly supported by BioGPS gene expression data to be expressed in Human HEK293T cells



### Immunohistochemistry

**Image 2.** Rabbit Anti-RB1CC1 Antibody Formalin Fixed Paraffin Embedded Tissue: Human heart Tissue Observed Staining: Peripheral membrane Primary Antibody Concentration: N/A Other Working Concentrations: 1:600 Secondary Antibody: Donkey anti-Rabbit-Cy3 Secondary Antibody Concentration: 1:200 Magnification: 20X Exposure Time: 0.5 - 2.0 sec