

Datasheet for ABIN2784206
anti-FHL3 antibody (Middle Region)[Go to Product page](#)

1 Image

Overview

Quantity:	100 µL
Target:	FHL3
Binding Specificity:	Middle Region
Reactivity:	Human, Mouse, Rat, Cow, Pig, Dog, Horse, Guinea Pig, Rabbit, Zebrafish (Danio rerio)
Host:	Rabbit
Clonality:	Polyclonal
Conjugate:	This FHL3 antibody is un-conjugated
Application:	Western Blotting (WB)

Product Details

Immunogen:	The immunogen is a synthetic peptide directed towards the middle region of human FHL3
Sequence:	HRECLVCTGC QTPLAGQQFT SRDEDPYCVA CFGELFAPKC SSCKRPVGL
Predicted Reactivity:	Cow: 86%, Dog: 93%, Guinea Pig: 86%, Horse: 93%, Human: 100%, Mouse: 92%, Pig: 93%, Rabbit: 93%, Rat: 93%, Zebrafish: 82%
Characteristics:	This is a rabbit polyclonal antibody against FHL3. It was validated on Western Blot using a cell lysate as a positive control.
Purification:	Affinity Purified

Target Details

Target:	FHL3
---------	------

Target Details

Alternative Name:	FHL3 (FHL3 Products)
Background:	<p>FHL3 contains 4 LIM zinc-binding domains. It is expressed only in skeletal muscle. FHL3 association with MyoD may contribute to the regulation of MyoD-dependent transcription of muscle genes and thereby myogenesis. LIM proteins are defined by the possession of a highly conserved double zinc finger motif called the LIM domain.[supplied by OMIM]. Publication Note: This RefSeq record includes a subset of the publications that are available for this gene. Please see the Entrez Gene record to access additional publications.</p> <p>Alias Symbols: MGC19547, MGC23614, MGC8696, SLIM2</p> <p>Protein Interaction Partner: CSF1, AMBP, TYMSOS, KRTAP12-1, KIRREL2, YPEL3, FBXL18, E2F8, PLEKHF2, WNK1, ZNF512B, UBE2Q1, C14orf105, RNMTL1, FAM90A1, QRIC1, TMX3, PHF21A, KLF3, MRPL27, ZNRD1, A1CF, SAP30BP, CNNM3, TRAF3IP2, EPM2AIP1, PPIG, GCM2, MPZL1, P4HA2, ADAM15, HYAL2, NPRL3, A</p> <p>Protein Size: 280</p>
Molecular Weight:	31 kDa
Gene ID:	2275
NCBI Accession:	NM_004468 , NP_004459
UniProt:	Q13643

Application Details

Application Notes:	Optimal working dilutions should be determined experimentally by the investigator.
Comment:	Antigen size: 280 AA
Restrictions:	For Research Use only

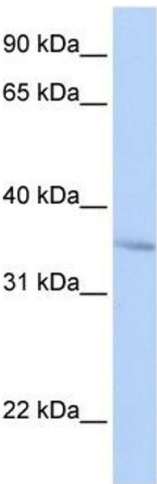
Handling

Format:	Liquid
Concentration:	Lot specific
Buffer:	Liquid. Purified antibody supplied in 1x PBS buffer with 0.09 % (w/v) sodium azide and 2 % sucrose.
Preservative:	Sodium azide
Precaution of Use:	This product contains Sodium azide: a POISONOUS AND HAZARDOUS SUBSTANCE which should be handled by trained staff only.

Handling

Handling Advice:	Avoid repeated freeze-thaw cycles.
Storage:	-20 °C
Storage Comment:	For short term use, store at 2-8°C up to 1 week. For long term storage, store at -20°C in small aliquots to prevent freeze-thaw cycles.

Images



Western Blotting

Image 1. WB Suggested Anti-FHL3 Antibody Titration: 0.2-1 ug/ml Positive Control: HepG2 cell lysate