

Datasheet for ABIN2784212  
**anti-ING1 antibody (N-Term)**



[Go to Product page](#)

3 Images

### Overview

Quantity:	100 µL
Target:	ING1
Binding Specificity:	N-Term
Reactivity:	Human
Host:	Rabbit
Clonality:	Polyclonal
Conjugate:	This ING1 antibody is un-conjugated
Application:	Western Blotting (WB)

### Product Details

Immunogen:	The immunogen is a synthetic peptide directed towards the N terminal region of human ING1
Sequence:	SPAERLVAEA DEGGPSAITG MGLCFRCLLF SFSGRSGVEG GRVDLNVFGS
Predicted Reactivity:	Human: 100%
Characteristics:	This is a rabbit polyclonal antibody against ING1. It was validated on Western Blot.
Purification:	Affinity Purified

### Target Details

Target:	ING1
Alternative Name:	ING1 ( <a href="#">ING1 Products</a> )
Background:	ING1 is a tumor suppressor protein that can induce cell growth arrest and apoptosis. The

## Target Details

---

protein is a nuclear protein that physically interacts with the tumor suppressor protein TP53 and is a component of the p53 signaling pathway. Reduced expression and rearrangement of ING1 gene have been detected in various cancers.

Alias Symbols: p24ING1c, p33, p33ING1, p33ING1b, p47, p47ING1a

Protein Interaction Partner: SIRT1, SIRT2, UBC, HDAC1, KIAA0101, PCNA, RBP1, RBBP7, RBBP4, HDAC2, BRMS1L, SIN3A, BRMS1, SAP30, ELAVL1, SMURF1, COPS2, NQO1, HIST2H3C, MRGBP, YWHAZ, YWHAH, YWHAG, YWHAE, YWHAB, KPNA2, KPNB1, YWHAQ, SFN, ESR1, LMNA, CDKN2A, TP53, KAT2B, DMAP1, EP300, HHT

Protein Size: 422

---

Molecular Weight: 47 kDa

---

Gene ID: 3621

---

NCBI Accession: [NM\\_005537](#), [NP\\_005528](#)

---

UniProt: [Q9UK53](#)

---

Pathways: [Protein targeting to Nucleus](#), [Autophagy](#)

## Application Details

---

Application Notes: Optimal working dilutions should be determined experimentally by the investigator.

Comment: Antigen size: 422 AA

Restrictions: For Research Use only

## Handling

---

Format: Liquid

Concentration: Lot specific

Buffer: Liquid. Purified antibody supplied in 1x PBS buffer with 0.09 % (w/v) sodium azide and 2 % sucrose.

Preservative: Sodium azide

Precaution of Use: This product contains Sodium azide: a POISONOUS AND HAZARDOUS SUBSTANCE which should be handled by trained staff only.

Handling Advice: Avoid repeated freeze-thaw cycles.

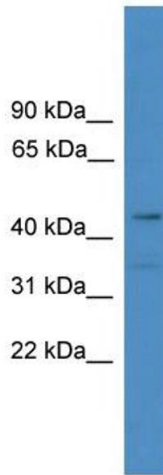
Storage: -20 °C

---

## Handling

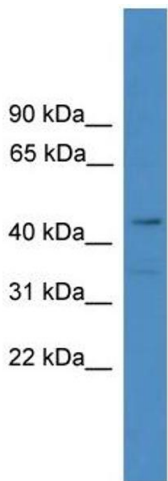
Storage Comment: For short term use, store at 2-8°C up to 1 week. For long term storage, store at -20°C in small aliquots to prevent freeze-thaw cycles.

## Images



### Western Blotting

**Image 1.** WB Suggested Anti-ING1 Antibody Titration: 0.2-1 ug/ml ELISA Titer: 1:312500 Positive Control: HeLa cell lysate. ING1 is strongly supported by BioGPS gene expression data to be expressed in HeLa



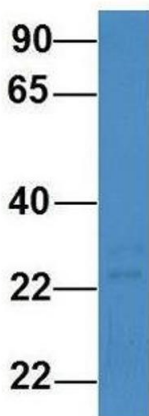
Rabbit Anti-ING1 Antibody  
Catalog Number: ARP50511  
Lot Number: QC30126  
Lane: HeLa Cell Lysate

Antibody Titration: 1.0µg/ml  
Gel Concentration: 12%

### Western Blotting

**Image 2.** WB Suggested Anti-ING1 Antibody Titration: 0.2-1 µg/mL ELISA Titer: 1:12500 Positive Control: HeLa cell lysate. ING1 is strongly supported by BioGPS gene expression data to be expressed in HeLa

## ING1



### Western Blotting

**Image 3.** Host: Rabbit Target Name: ING1 Sample Type: Human 721\_B Antibody Dilution: 1.0ug/ml ING1 is strongly supported by BioGPS gene expression data to be expressed in Human 721\_B cells