



[Go to Product page](#)

Datasheet for ABIN2784213
anti-ING1 antibody (C-Term)

2 Images

Overview

Quantity:	100 µL
Target:	ING1
Binding Specificity:	C-Term
Reactivity:	Human, Mouse, Rat, Guinea Pig, Zebrafish (Danio rerio), Cow, Dog, Horse, Rabbit
Host:	Rabbit
Clonality:	Polyclonal
Application:	Western Blotting (WB)

Product Details

Immunogen:	The immunogen is a synthetic peptide directed towards the C terminal region of human ING1
Sequence:	EKKAKTSKKK KRSKAKAERE ASPADLPIDP NEPTYCLCNQ VSYGEMIGCD
Predicted Reactivity:	Cow: 100%, Dog: 100%, Guinea Pig: 100%, Horse: 93%, Human: 100%, Mouse: 100%, Rabbit: 93%, Rat: 100%, Zebrafish: 86%
Characteristics:	This is a rabbit polyclonal antibody against ING1. It was validated on Western Blot using a cell lysate as a positive control.
Purification:	Protein A purified

Target Details

Target:	ING1
Alternative Name:	ING1 (ING1 Products)

Target Details

Background: ING1 is a tumor suppressor protein that can induce cell growth arrest and apoptosis. The protein is a nuclear protein that physically interacts with the tumor suppressor protein TP53 and is a component of the p53 signaling pathway. Reduced expression and rearrangement of ING1 gene have been detected in various cancers. This gene encodes a tumor suppressor protein that can induce cell growth arrest and apoptosis. The encoded protein is a nuclear protein that physically interacts with the tumor suppressor protein TP53 and is a component of the p53 signaling pathway. Reduced expression and rearrangement of this gene have been detected in various cancers. Multiple alternatively spliced transcript variants encoding distinct isoforms have been reported.

Alias Symbols: p24ING1c, p33, p33ING1, p33ING1b, p47, p47ING1a

Protein Interaction Partner: SIRT1, SIRT2, UBC, HDAC1, KIAA0101, PCNA, RBP1, RBBP7, RBBP4, HDAC2, BRMS1L, SIN3A, BRMS1, SAP30, ELAVL1, SMURF1, COPS2, NQO1, HIST2H3C, MRGBP, YWHAZ, YWHAH, YWHAG, YWHAE, YWHAB, KPNA2, KPNB1, YWHAQ, SFN, ESR1, LMNA, CDKN2A, TP53, KAT2B, DMAP1, EP300, HHT

Protein Size: 279

Molecular Weight: 32 kDa

Gene ID: 3621

NCBI Accession: [NM_198219](#), [NP_937862](#)

UniProt: [Q5T9H0](#)

Pathways: [Protein targeting to Nucleus](#), [Autophagy](#)

Application Details

Application Notes: Optimal working dilutions should be determined experimentally by the investigator.

Comment: Antigen size: 279 AA

Restrictions: For Research Use only

Handling

Format: Liquid

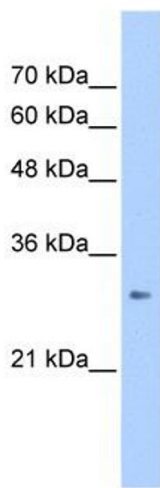
Concentration: Lot specific

Buffer: Liquid. Purified antibody supplied in 1x PBS buffer with 0.09 % (w/v) sodium azide and 2 % sucrose.

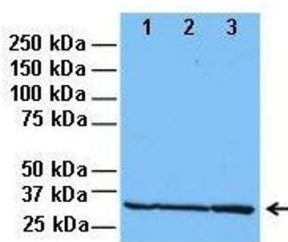
Handling

Preservative:	Sodium azide
Precaution of Use:	This product contains Sodium azide: a POISONOUS AND HAZARDOUS SUBSTANCE which should be handled by trained staff only.
Handling Advice:	Avoid repeated freeze-thaw cycles.
Storage:	-20 °C
Storage Comment:	For short term use, store at 2-8°C up to 1 week. For long term storage, store at -20°C in small aliquots to prevent freeze-thaw cycles.

Images



ING1



Western Blotting

Image 1. WB Suggested Anti-ING1 Antibody Titration: 2.5ug/ml Positive Control: HepG2 cell lysate There is BioGPS gene expression data showing that ING1 is expressed in HepG2

Western Blotting

Image 2. Lanes: 1: 30ug HeLa lysate, 2: 30ug HFF lysate, 3: 30ug U2OS lysate Primary Antibody Dilution: 1:1000 Secondary Antibody: Anti-rabbit HRP Secondary Antibody Dilution: 1:5000 Gene Name: ING1 Submitted by: Dr. Hyung Suk Oh, Knipe Lab, Harvard Medical School

See Immunoblot 2 Data and customer Feedback for more Information