

Datasheet for ABIN2784214  
**anti-SPRY3 antibody (N-Term)**[Go to Product page](#)

## 1 Image

## Overview

Quantity:	100 µL
Target:	SPRY3
Binding Specificity:	N-Term
Reactivity:	Human, Mouse, Rat, Cow, Guinea Pig, Horse, Rabbit
Host:	Rabbit
Clonality:	Polyclonal
Conjugate:	This SPRY3 antibody is un-conjugated
Application:	Western Blotting (WB)

## Product Details

Immunogen:	The immunogen is a synthetic peptide directed towards the N terminal region of human SPRY3
Sequence:	ALSSPSLIVQ THKSDWSLAT MPTSLPRSLS QCHQLQPLPQ HLSQSSIASS
Predicted Reactivity:	Cow: 100%, Guinea Pig: 100%, Horse: 100%, Human: 100%, Mouse: 100%, Rabbit: 100%, Rat: 100%
Characteristics:	This is a rabbit polyclonal antibody against SPRY3. It was validated on Western Blot using a cell lysate as a positive control.
Purification:	Affinity Purified

## Target Details

Target:	SPRY3
---------	-------

## Target Details

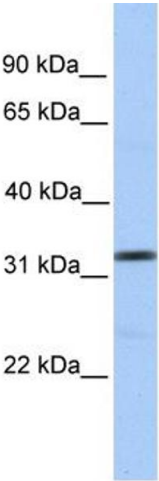
Alternative Name:	SPRY3 ( <a href="#">SPRY3 Products</a> )
Background:	<p>SPRY3 contains 1 B30.2/SPRY domain. Sprouty/Caveolin-1 interaction modulates signaling in a growth factor- and Sprouty isoform-specific manner. Spry 1, 2 and 3 expression was observed in placental tissue from all three trimesters. The exact function of SPRY3 remains unknown.</p> <p>Alias Symbols: HSPRY3</p> <p>Protein Interaction Partner: TESK1,</p> <p>Protein Size: 288</p>
Molecular Weight:	31 kDa
Gene ID:	10251
NCBI Accession:	<a href="#">NM_005840</a> , <a href="#">NP_005831</a>
UniProt:	<a href="#">O43610</a>

## Application Details

Application Notes:	Optimal working dilutions should be determined experimentally by the investigator.
Comment:	Antigen size: 288 AA
Restrictions:	For Research Use only

## Handling

Format:	Liquid
Concentration:	Lot specific
Buffer:	Liquid. Purified antibody supplied in 1x PBS buffer with 0.09 % (w/v) sodium azide and 2 % sucrose.
Preservative:	Sodium azide
Precaution of Use:	This product contains Sodium azide: a POISONOUS AND HAZARDOUS SUBSTANCE which should be handled by trained staff only.
Handling Advice:	Avoid repeated freeze-thaw cycles.
Storage:	-20 °C
Storage Comment:	For short term use, store at 2-8°C up to 1 week. For long term storage, store at -20°C in small aliquots to prevent freeze-thaw cycles.



Western Blotting

**Image 1.** WB Suggested Anti-SPRY3 Antibody Titration: 0.2-1 ug/ml Positive Control: Human brain