



[Go to Product page](#)

Datasheet for ABIN2784216

anti-SPRY1 antibody (N-Term)

2 Images

Overview

Quantity:	100 µL
Target:	SPRY1
Binding Specificity:	N-Term
Reactivity:	Human, Mouse, Dog, Horse, Rabbit, Rat, Cow, Guinea Pig, Zebrafish (Danio rerio)
Host:	Rabbit
Clonality:	Polyclonal
Application:	Western Blotting (WB)

Product Details

Immunogen:	The immunogen is a synthetic peptide directed towards the N-terminal region of Human SPRY1
Sequence:	PTAILSLDQI KAIRGSNEYT EGPSVVKRPA PRTAPRQEKH ERTHEIIPIN
Predicted Reactivity:	Cow: 100%, Dog: 100%, Guinea Pig: 100%, Horse: 100%, Human: 100%, Mouse: 100%, Rabbit: 100%, Rat: 100%, Zebrafish: 100%
Characteristics:	This is a rabbit polyclonal antibody against SPRY1. It was validated on Western Blot.
Purification:	Affinity Purified

Target Details

Target:	SPRY1
Alternative Name:	SPRY1 (SPRY1 Products)
Background:	SPRY1 belongs to the sprouty family. It contains 1 SPR (sprouty) domain. SPRY1 may function

Target Details

as an antagonist of fibroblast growth factor (FGF) pathways and may negatively modulate respiratory organogenesis.

Alias Symbols: hSPRY1

Protein Interaction Partner: NOTCH2NL, KRTAP10-3, KRTAP10-8, KRTAP10-5, KRTAP10-1, KRTAP10-9, KRTAP10-7, LCE2D, LCE1B, HEXIM2, KRTAP4-2, R3HDM2, SPRY2, CREB5, OTX1, MEOX2, MDFI, HOXA1, BAG3, SOCS4, GEMIN4, YY1, STAT3, KPNA2, HRG, GRB2, CBL, LAT, MAP4K1, PLCG1, CBLB, ELAVL1, SH3KBP1,

Protein Size: 319

Molecular Weight: 35 kDa

Gene ID: 10252

NCBI Accession: [NM_005841](#), [NP_005832](#)

UniProt: [O43609](#)

Pathways: [EGFR Signaling Pathway](#), [EGFR Downregulation](#)

Application Details

Application Notes: Optimal working dilutions should be determined experimentally by the investigator.

Comment: Antigen size: 319 AA

Restrictions: For Research Use only

Handling

Format: Liquid

Concentration: Lot specific

Buffer: Liquid. Purified antibody supplied in 1x PBS buffer with 0.09 % (w/v) sodium azide and 2 % sucrose.

Preservative: Sodium azide

Precaution of Use: This product contains Sodium azide: a POISONOUS AND HAZARDOUS SUBSTANCE which should be handled by trained staff only.

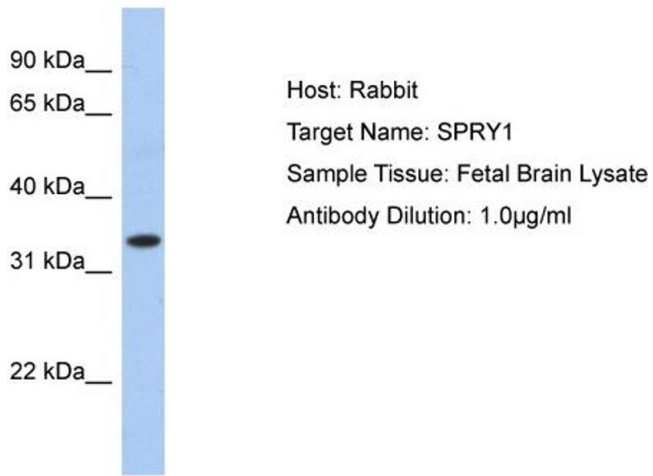
Handling Advice: Avoid repeated freeze-thaw cycles.

Storage: -20 °C

Storage Comment: For short term use, store at 2-8°C up to 1 week. For long term storage, store at -20°C in small

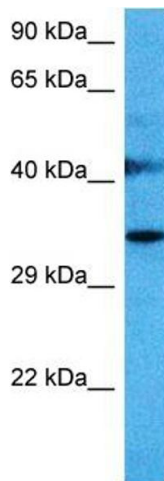
aliquots to prevent freeze-thaw cycles.

Images



Western Blotting

Image 1. WB Suggested Anti-SPRY1 Antibody Titration: 0.2-1 ug/ml ELISA Titer: 1:1562500 Positive Control: 293T cell lysate



Western Blotting

Image 2. Host: Mouse Target Name: SPRY1 Sample Tissue: Mouse Liver Antibody Dilution: 1ug/ml