

Datasheet for ABIN2784217  
**anti-SPRY2 antibody (N-Term)**[Go to Product page](#)

2 Images

1 Publication

## Overview

Quantity:	100 µL
Target:	SPRY2
Binding Specificity:	N-Term
Reactivity:	Human, Mouse, Rat, Dog, Cow, Horse, Rabbit, Pig, Guinea Pig
Host:	Rabbit
Clonality:	Polyclonal
Conjugate:	This SPRY2 antibody is un-conjugated
Application:	Western Blotting (WB), Immunohistochemistry (IHC)

## Product Details

Immunogen:	The immunogen is a synthetic peptide directed towards the N terminal region of human SPRY2
Sequence:	MEARAQSGNG SQPLLQTPRD GGRQRGEPDP RDALTQQVHV LSLDQIRAIR
Predicted Reactivity:	Cow: 93%, Dog: 100%, Guinea Pig: 92%, Horse: 93%, Human: 100%, Mouse: 100%, Pig: 100%, Rabbit: 86%, Rat: 100%
Characteristics:	This is a rabbit polyclonal antibody against SPRY2. It was validated on Western Blot using a cell lysate as a positive control.
Purification:	Affinity Purified

## Target Details

Target:	SPRY2
---------	-------

## Target Details

Alternative Name: SPRY2 ([SPRY2 Products](#))

**Background:** SPRY2 is a protein belonging to the sprouty family. It contains a carboxyl-terminal cysteine-rich domain essential for the inhibitory activity on receptor tyrosine kinase signaling proteins and is required for growth factor stimulated translocation of the protein to membrane ruffles. In primary dermal endothelial cells this gene is transiently upregulated in response to fibroblast growth factor two. SPRY2 is indirectly involved in the non-cell autonomous inhibitory effect on fibroblast growth factor two signaling. The protein interacts with Cas-Br-M (murine) ectropic retroviral transforming sequence, and can function as a bimodal regulator of epidermal growth factor receptor/mitogen-activated protein kinase signaling. SPRY2 may play a role in alveoli branching during lung development as shown by a similar mouse protein. This gene encodes a protein belonging to the sprouty family. The encoded protein contains a carboxyl-terminal cysteine-rich domain essential for the inhibitory activity on receptor tyrosine kinase signaling proteins and is required for growth factor stimulated translocation of the protein to membrane ruffles. In primary dermal endothelial cells this gene is transiently upregulated in response to fibroblast growth factor two. This protein is indirectly involved in the non-cell autonomous inhibitory effect on fibroblast growth factor two signaling. The protein interacts with Cas-Br-M (murine) ectropic retroviral transforming sequence, and can function as a bimodal regulator of epidermal growth factor receptor/mitogen-activated protein kinase signaling. This protein may play a role in alveoli branching during lung development as shown by a similar mouse protein. Publication Note: This RefSeq record includes a subset of the publications that are available for this gene. Please see the Entrez Gene record to access additional publications.

Alias Symbols: MGC23039, hSPRY2

Protein Interaction Partner: PTGER3, PRKAB2, KRTAP4-11, ATRIP, KRTAP5-6, KRTAP10-3, KRTAP10-8, KRTAP10-5, KRTAP10-11, KRTAP10-1, KRTAP10-9, LCE3E, KRTAP5-9, GP9, OTX1, MLLT6, MEOX2, MDFI, LASP1, LCE2D, LCE1B, RUNX1T1, AQP1, LCE3C, LCE4A, ZNF417, HEXIM2, CATSPER1, LONRF1, KRTAP4-7, KR

Protein Size: 315

Molecular Weight: 35 kDa

Gene ID: 10253

NCBI Accession: [NM\\_005842](#), [NP\\_005833](#)

UniProt: [O43597](#)

Pathways: [EGFR Signaling Pathway](#), [Sensory Perception of Sound](#), [EGFR Downregulation](#)

## Application Details

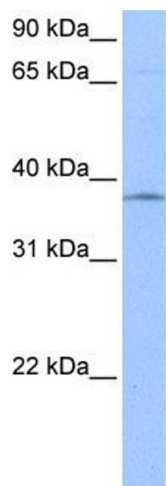
Application Notes:	Optimal working dilutions should be determined experimentally by the investigator.
Comment:	Antigen size: 315 AA
Restrictions:	For Research Use only

## Handling

Format:	Liquid
Concentration:	Lot specific
Buffer:	Liquid. Purified antibody supplied in 1x PBS buffer with 0.09 % (w/v) sodium azide and 2 % sucrose.
Preservative:	Sodium azide
Precaution of Use:	This product contains Sodium azide: a POISONOUS AND HAZARDOUS SUBSTANCE which should be handled by trained staff only.
Handling Advice:	Avoid repeated freeze-thaw cycles.
Storage:	-20 °C
Storage Comment:	For short term use, store at 2-8°C up to 1 week. For long term storage, store at -20°C in small aliquots to prevent freeze-thaw cycles.

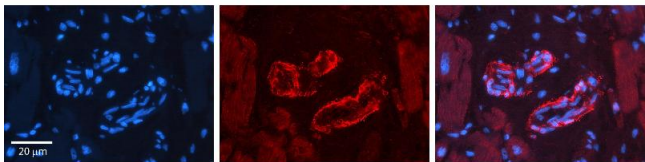
## Publications

Product cited in:	Ewing, Chu, Elisma, Li, Taylor, Climie, McBroom-Cerajewski, Robinson, OConnor, Li, Taylor, Dharsee, Ho, Heilbut, Moore, Zhang, Ornatsky, Bukhman, Ethier, Sheng, Vasilescu, Abu-Farha, Lambert, Duewel et al.: "Large-scale mapping of human protein-protein interactions by mass spectrometry. ..." in: <b>Molecular systems biology</b> , Vol. 3, pp. 89, (2007) ( <a href="#">PubMed</a> ).
-------------------	--



Western Blotting

**Image 1.** WB Suggested Anti-SPRY2 Antibody Titration: 0.2-1 ug/ml Positive Control: HepG2 cell lysate



Immunohistochemistry

**Image 2.** Rabbit Anti-SPRY2 Antibody Formalin Fixed Paraffin Embedded Tissue: Human heart Tissue Observed Staining: Cytoplasmic in vasculature Primary Antibody Concentration: 1:100 Other Working Concentrations: 1:600 Secondary Antibody: Donkey anti-Rabbit-Cy3 Secondary Antibody Concentration: 1:200 Magnification: 20X Exposure Time: 0.5 - 2.0 sec