

Datasheet for ABIN2784220
anti-SMYD5 antibody (C-Term)[Go to Product page](#)

3 Images

Overview

Quantity:	100 µL
Target:	SMYD5
Binding Specificity:	C-Term
Reactivity:	Human, Mouse, Rat, Cow, Dog, Rabbit, Zebrafish (Danio rerio), Guinea Pig, Horse
Host:	Rabbit
Clonality:	Polyclonal
Conjugate:	This SMYD5 antibody is un-conjugated
Application:	Western Blotting (WB)

Product Details

Immunogen:	The immunogen is a synthetic peptide directed towards the C terminal region of human SMYD5
Sequence:	HSRHKILREN YLFCVSCP KC LAEADPNVT S EEEEEEEEEEE EGEPEDAEL
Predicted Reactivity:	Cow: 100%, Dog: 100%, Guinea Pig: 100%, Horse: 100%, Human: 100%, Mouse: 100%, Rabbit: 100%, Rat: 100%, Zebrafish: 93%
Characteristics:	This is a rabbit polyclonal antibody against SMYD5. It was validated on Western Blot using a cell lysate as a positive control.
Purification:	Affinity Purified

Target Details

Target:	SMYD5
---------	-------

Target Details

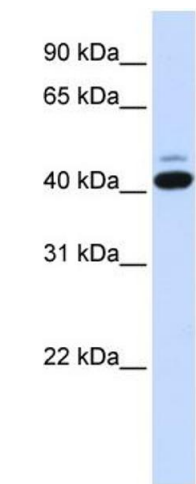
Alternative Name:	SMYD5 (SMYD5 Products)
Background:	<p>SMYD5 contains 1 MYND-type zinc finger and 1 SET domain. The exact function of SMYD5 remains unknown.</p> <p>Alias Symbols: NN8-4AG, RAI15, RRG1, ZMYND23</p> <p>Protein Interaction Partner: UBC,</p> <p>Protein Size: 418</p>
Molecular Weight:	47 kDa
Gene ID:	10322
NCBI Accession:	NM_006062 , NP_006053
UniProt:	Q6GMV2

Application Details

Application Notes:	Optimal working dilutions should be determined experimentally by the investigator.
Comment:	Antigen size: 418 AA
Restrictions:	For Research Use only

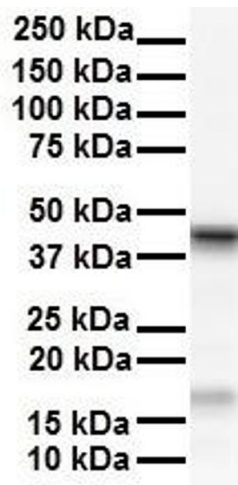
Handling

Format:	Liquid
Concentration:	Lot specific
Buffer:	Liquid. Purified antibody supplied in 1x PBS buffer with 0.09 % (w/v) sodium azide and 2 % sucrose.
Preservative:	Sodium azide
Precaution of Use:	This product contains Sodium azide: a POISONOUS AND HAZARDOUS SUBSTANCE which should be handled by trained staff only.
Handling Advice:	Avoid repeated freeze-thaw cycles.
Storage:	-20 °C
Storage Comment:	For short term use, store at 2-8°C up to 1 week. For long term storage, store at -20°C in small aliquots to prevent freeze-thaw cycles.



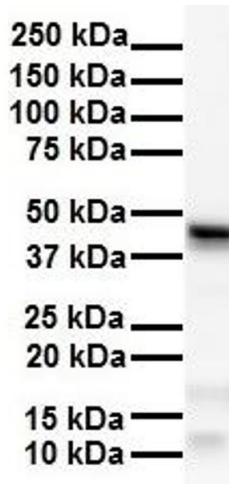
Western Blotting

Image 1. WB Suggested Anti-SMYD5 Antibody Titration: 0.2-1 ug/ml ELISA Titer: 1:62500 Positive Control: HeLa cell lysate SMYD5 is supported by BioGPS gene expression data to be expressed in HeLa



Western Blotting

Image 2. WB Suggested Anti-SMYD5 antibody Titration: 1 ug/mL Sample Type: Human HepG2



Western Blotting

Image 3. WB Suggested Anti-SMYD5 antibody Titration: 1 ug/mL Sample Type: Human HeLa