

Datasheet for ABIN2784221  
**anti-YAP1 antibody (C-Term)**



[Go to Product page](#)

7 Images

### Overview

Quantity:	100 µL
Target:	YAP1
Binding Specificity:	C-Term
Reactivity:	Human, Mouse, Rat, Zebrafish (Danio rerio), Dog, Sheep, Cow, Horse, Pig, Rabbit
Host:	Rabbit
Clonality:	Polyclonal
Conjugate:	This YAP1 antibody is un-conjugated
Application:	Western Blotting (WB), Immunohistochemistry (IHC)

### Product Details

Immunogen:	The immunogen is a synthetic peptide directed towards the C terminal region of human YAP1
Sequence:	QLPTLEQDGG TQNPVSSPGM SVELRTMTTN SSDPFLNSGT YHSRDESTDS
Predicted Reactivity:	Cow: 100%, Dog: 100%, Horse: 100%, Human: 100%, Mouse: 100%, Pig: 100%, Rabbit: 100%, Rat: 100%, Sheep: 100%, Zebrafish: 100%
Characteristics:	This is a rabbit polyclonal antibody against YAP1. It was validated on Western Blot using a cell lysate as a positive control.
Purification:	Affinity Purified

### Target Details

Target:	YAP1
---------	------

## Target Details

---

Alternative Name:	YAP1 ( <a href="#">YAP1 Products</a> )
Background:	<p>YAP1 is the human ortholog of chicken YAP protein which binds to the SH3 domain of the Yes proto-oncogene product. YAP1 contains a WW domain that is found in various structural, regulatory and signaling molecules in yeast, nematode, and mammals, and may be involved in protein-protein interaction.</p> <p>Alias Symbols: YAP, YAP2, YAP65, YKI</p> <p>Protein Interaction Partner: ABL1, TP73, RUNX1, AMOT, UBC, FBXW7, ARFIP1, RTF1, PAPOLA, PRMT3, TOM1, TSNAX, STAT1, MAP2K1, NF2, WBP2, RASSF8, YWHAQ, INADL, RAPGEF2, TJP2, SLC9A3R2, PDLIM7, LATS1, MPDZ, RAE1, ARID1A, YWHAZ, YWHAH, YWHAG, YWHAE, YWHAB, TP53BP2, TEAD3, TEAD1, SMARCD1, D</p> <p>Protein Size: 504</p>
Molecular Weight:	54 kDa
Gene ID:	10413
NCBI Accession:	<a href="#">NM_001130145</a> , <a href="#">NP_001123617</a>
UniProt:	<a href="#">P46937</a>
Pathways:	<a href="#">MAPK Signaling</a> , <a href="#">Stem Cell Maintenance</a> , <a href="#">Regulation of Lipid Metabolism by PPARAlpha</a>

## Application Details

---

Application Notes:	Optimal working dilutions should be determined experimentally by the investigator.
Comment:	Antigen size: 504 AA
Restrictions:	For Research Use only

## Handling

---

Format:	Liquid
Concentration:	Lot specific
Buffer:	Liquid. Purified antibody supplied in 1x PBS buffer with 0.09 % (w/v) sodium azide and 2 % sucrose.
Preservative:	Sodium azide
Precaution of Use:	This product contains Sodium azide: a POISONOUS AND HAZARDOUS SUBSTANCE which should be handled by trained staff only.

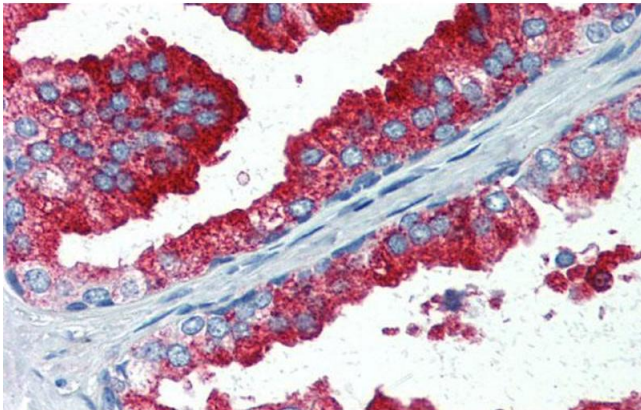
## Handling

Handling Advice: Avoid repeated freeze-thaw cycles.

Storage: -20 °C

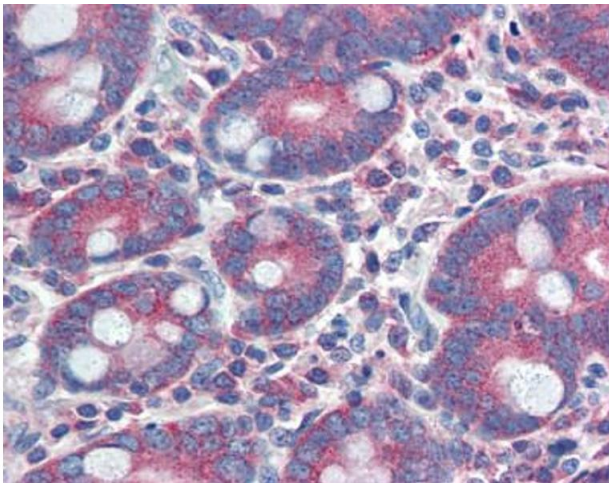
Storage Comment: For short term use, store at 2-8°C up to 1 week. For long term storage, store at -20°C in small aliquots to prevent freeze-thaw cycles.

## Validation report #100034 for Immunohistochemistry (IHC)



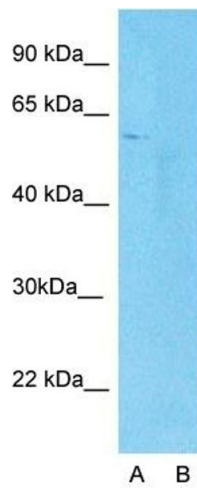
### Immunohistochemistry

**Image 1.** Immunohistochemistry with Human Prostate lysate tissue at an antibody concentration of 5.0ug/ml using anti-YAP1 antibody



### Immunohistochemistry

**Image 2.**



### Western Blotting

**Image 3.** Host: Rabbit Target Name: YAP1 Sample Type: Human Fetal Lung cell Lane A: Primary Antibody Lane B: Primary Antibody + Blocking Peptide Primary Antibody Concentration: 1ug/ml Peptide Concentration: 5.0 ug/ml Lysate Quantity: 25ug/lane/lane Gel Concentration: 12%

Please check the [product details page](#) for more images. Overall 7 images are available for ABIN2784221.