

Datasheet for ABIN2784222

anti-NUMA1 antibody (C-Term)



[Go to Product page](#)

1 Image

1 Publication

Overview

Quantity:	100 µL
Target:	NUMA1
Binding Specificity:	C-Term
Reactivity:	Human, Mouse, Rat, Guinea Pig, Horse, Dog, Cow, Rabbit
Host:	Rabbit
Clonality:	Polyclonal
Conjugate:	This NUMA1 antibody is un-conjugated
Application:	Western Blotting (WB)

Product Details

Immunogen:	The immunogen is a synthetic peptide directed towards the C terminal region of human NUMA1
Sequence:	AQRLQAQLNE LQAQLSQKEQ AAEHYKLQME KAKTHYDAKK QQNQELQEQL
Predicted Reactivity:	Cow: 100%, Dog: 100%, Guinea Pig: 100%, Horse: 100%, Human: 100%, Mouse: 100%, Rabbit: 100%, Rat: 100%
Characteristics:	This is a rabbit polyclonal antibody against NUMA1. It was validated on Western Blot using a cell lysate as a positive control.
Purification:	Affinity Purified

Target Details

Target:	NUMA1
---------	-------

Target Details

Alternative Name:	NUMA1 (NUMA1 Products)
Background:	<p>NuMA is a structural element in maintaining nuclear integrity. A critical spindle pole-associated mechanism, called the END (Emi1/NuMA/dynein-dynactin) network, spatially restricts APC/C activity in early mitosis. The entire coding region and exon-intron boundaries of NuMa were screened in 92 familial breast cancer patients. But the results do not support the role of NuMA variants as breast cancer susceptibility alleles.</p> <p>Alias Symbols: NUMA</p> <p>Protein Interaction Partner: CCDC57, GMCL1, BRAP, DVL3, DVL2, DVL1, UBC, LGR4, ERG, RPA3, RPA2, RPA1, RNF2, EZH2, BMI1, SUZ12, EED, YWHAQ, LMNA, CBX6, WHSC1, HSP90AB1, HSP90AA1, ESR1, CDK6, VCP, SMURF1, MDC1, TP53BP1, ECT2, NCSTN, DDB1, EMILIN1, DYNLL1, RAE1, NUP98, CDK2, TERF2IP, TE</p> <p>Protein Size: 2115</p>
Molecular Weight:	238 kDa
Gene ID:	4926
NCBI Accession:	NM_006185 , NP_006176
UniProt:	Q14980
Pathways:	Caspase Cascade in Apoptosis , Regulation of Actin Filament Polymerization , M Phase

Application Details

Application Notes:	Optimal working dilutions should be determined experimentally by the investigator.
Comment:	Antigen size: 2115 AA
Restrictions:	For Research Use only

Handling

Format:	Liquid
Concentration:	Lot specific
Buffer:	Liquid. Purified antibody supplied in 1x PBS buffer with 0.09 % (w/v) sodium azide and 2 % sucrose.
Preservative:	Sodium azide
Precaution of Use:	This product contains Sodium azide: a POISONOUS AND HAZARDOUS SUBSTANCE which should be handled by trained staff only.

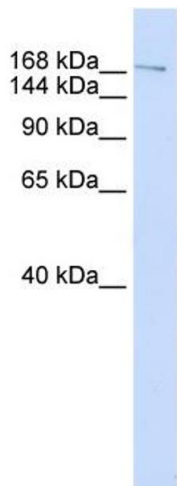
Handling

Handling Advice:	Avoid repeated freeze-thaw cycles.
Storage:	-20 °C
Storage Comment:	For short term use, store at 2-8°C up to 1 week. For long term storage, store at -20°C in small aliquots to prevent freeze-thaw cycles.

Publications

Product cited in:	Kilpivaara, Rantanen, Tamminen, Aittomäki, Blomqvist, Nevanlinna: "Comprehensive analysis of NuMA variation in breast cancer." in: BMC cancer , Vol. 8, pp. 71, (2008) (PubMed).
-------------------	---

Images



Western Blotting

Image 1. WB Suggested Anti-NUMA1 Antibody Titration: 0.2-1 ug/ml ELISA Titer: 1:12500 Positive Control: Human Lung